

**The utilization threshold for  
maintenance of Thicket floral  
diversity**

**Baseline Vegetation  
Assessment of the  
Colchester Section of the  
Greater Addo Elephant  
National Park**

Promotor: Prof E.E. Campbell

Co-Promotor: Prof R. M. Cowling

# Thicket and Elephants

Elephants are an integral part of the Thicket ecosystem, but they are causing major damage to the flora of the Greater Addo Elephant National Park

Why?

And

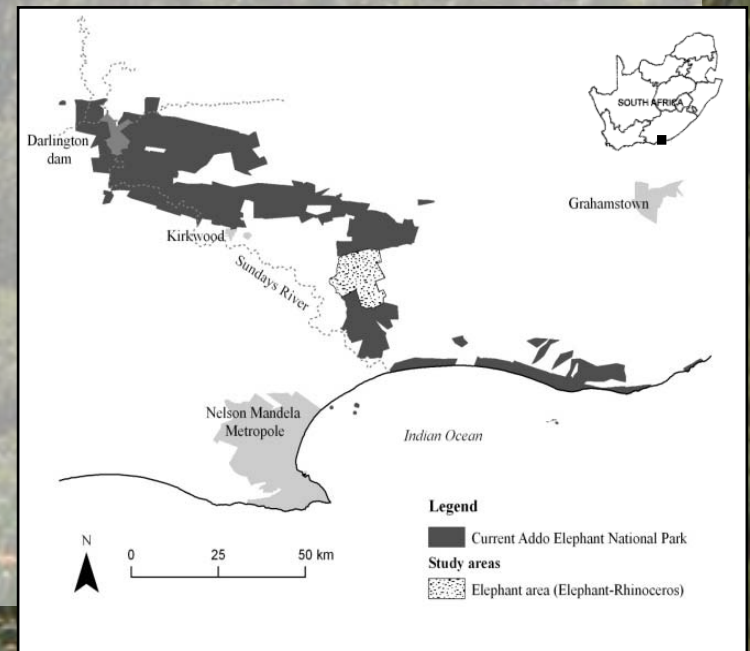
What to do?



# Greater Addo Elephant National Park

Mandate to conserve elephants AND “preserve intact a viable example of valley bushveld” (Hall-Martin and van der Walt 1979)

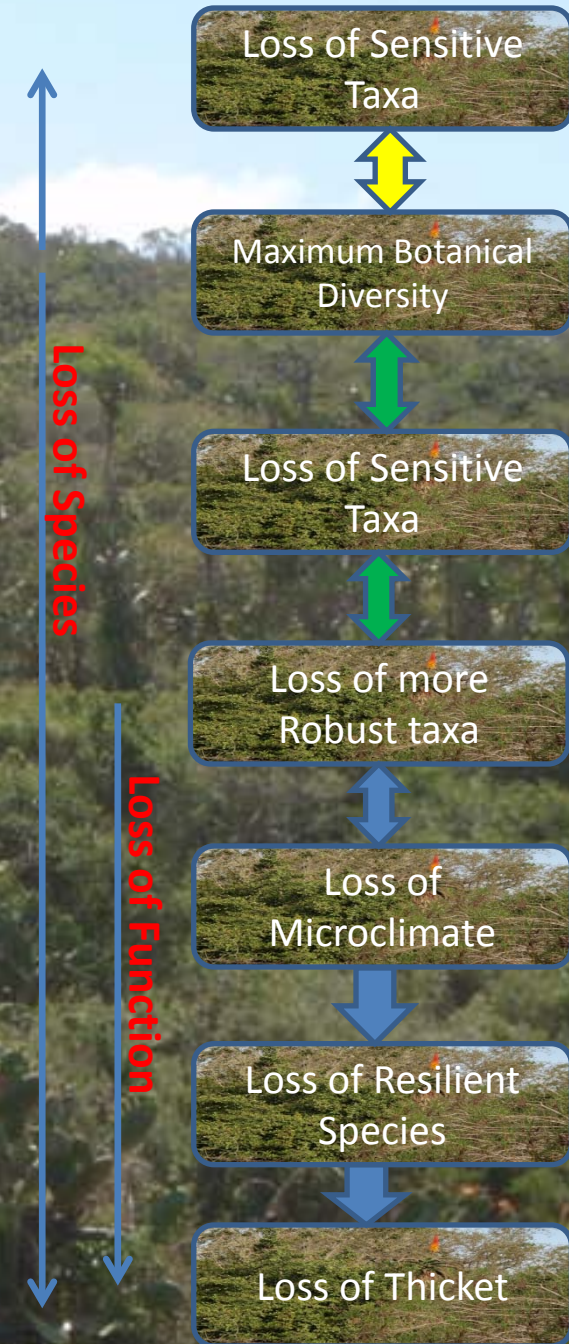
Elephant density fluctuates as high as  $3.8 \text{ elephants.km}^{-1}$



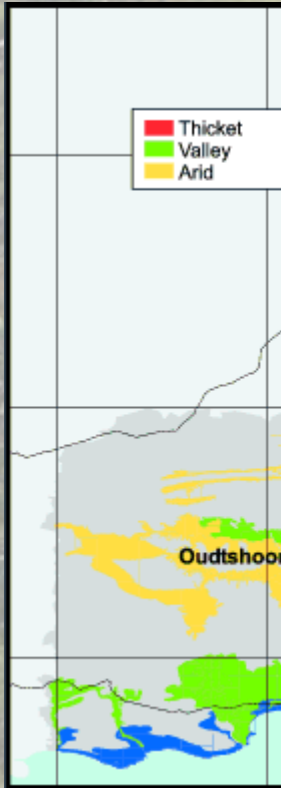
# Looking for Thresholds

Balancing act between conserving megaherbivores and maintaining the flora and ecosystem processes of Thicket

Can we identify utilization thresholds in Thicket?



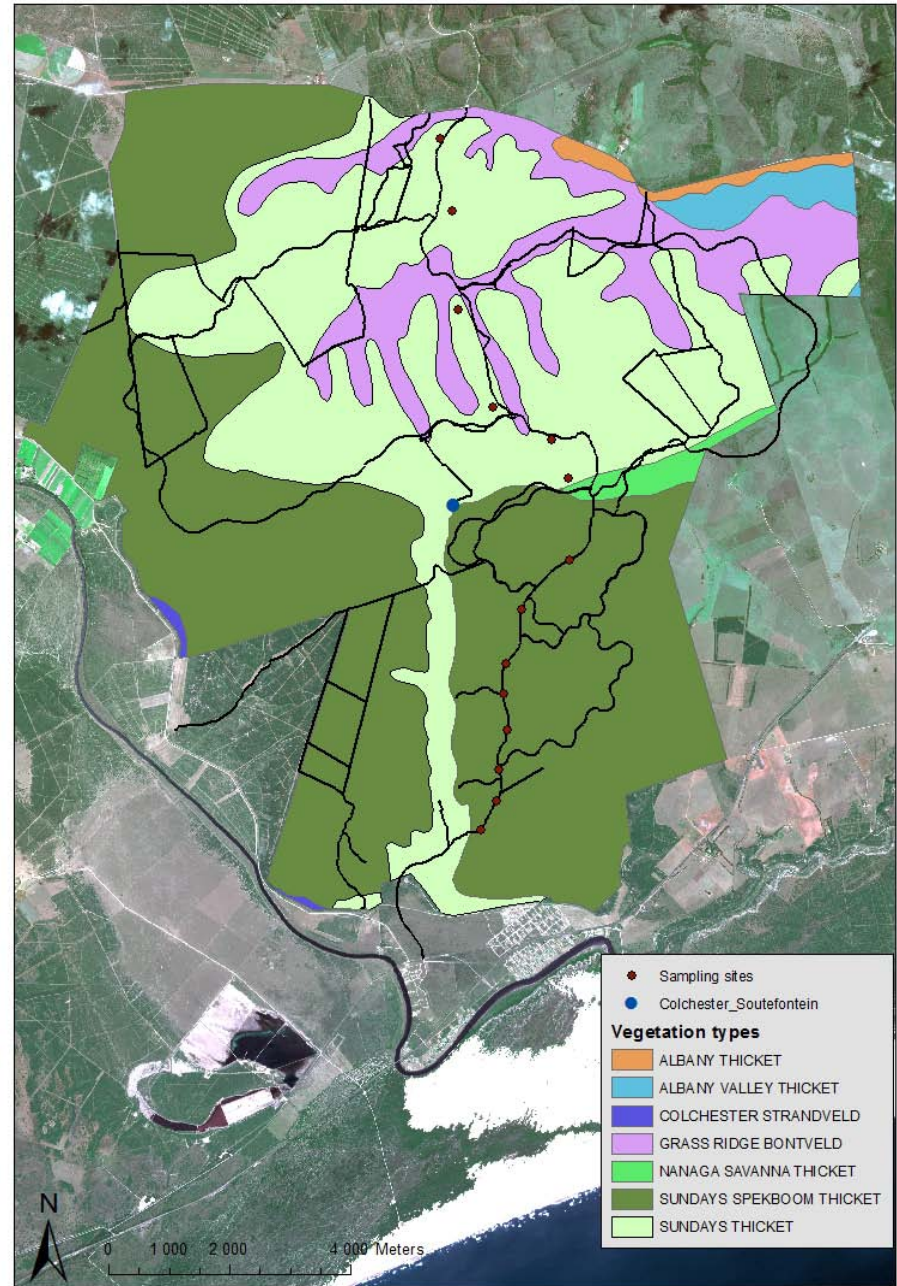
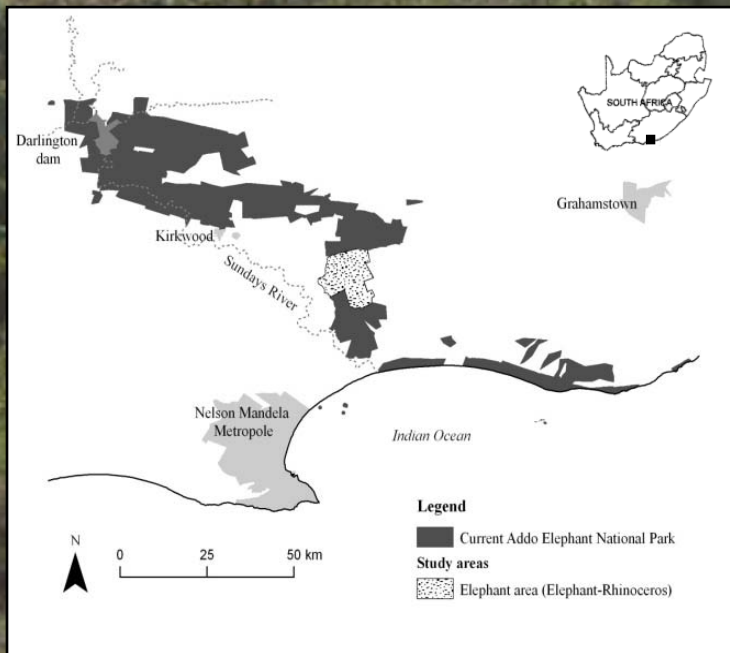
# Thicket types



# Aim

Describe the species composition and height structure of Spekboom Thicket and (mesic) Thicket vegetation types in the Colchester section of the GAENP

# Study site



# Materials and Methods

14 sampling sites selected

- 8 in Spekboom Thicket (VT)
- 6 in Thicket (T)

3 x 30m

at each

1m wide

## TOTAL OF

- 42 line transects
- 84 belt transects, made of
- 1 260 1m x 2m quadrats
- 61 x 42 = 2 562 height measurements

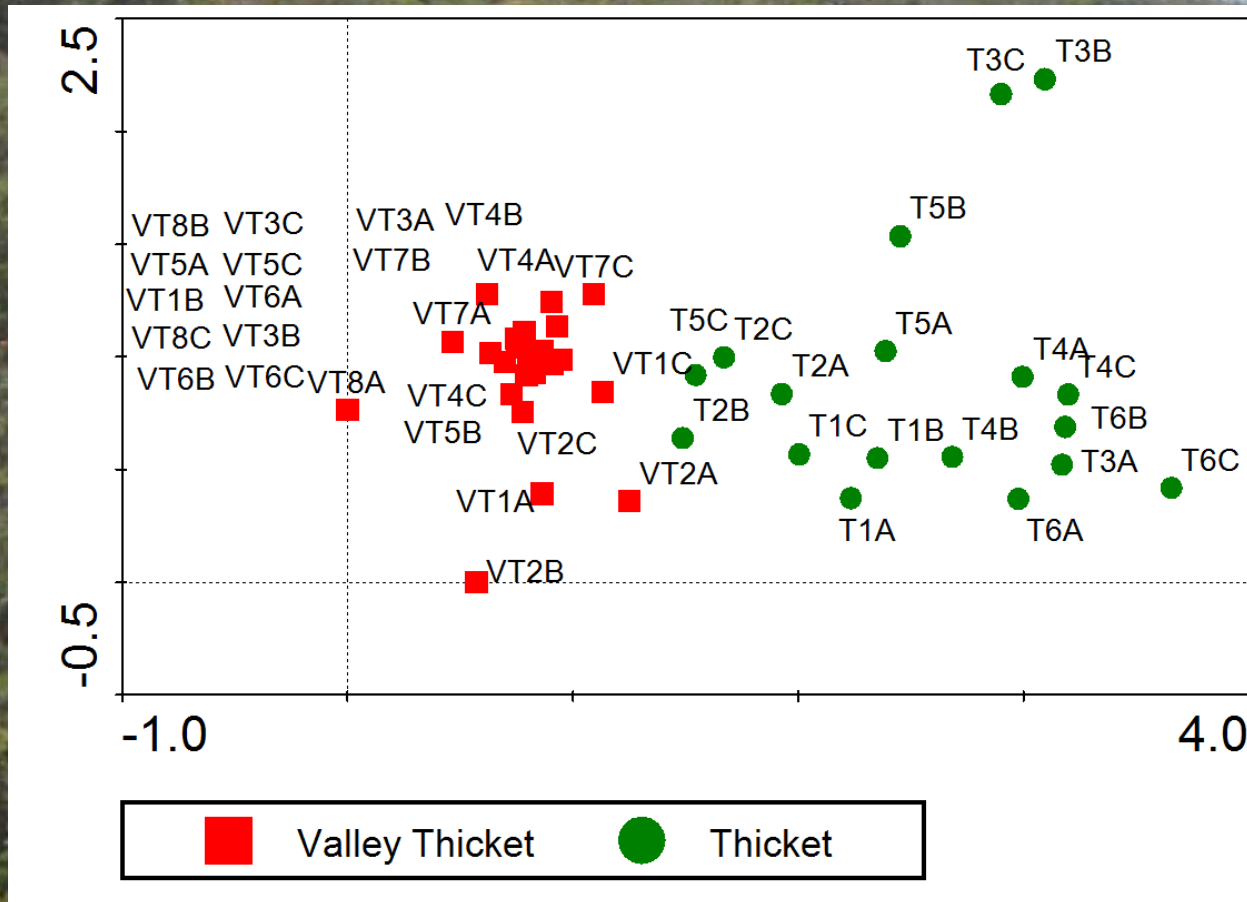
1 m

1 m

30 m

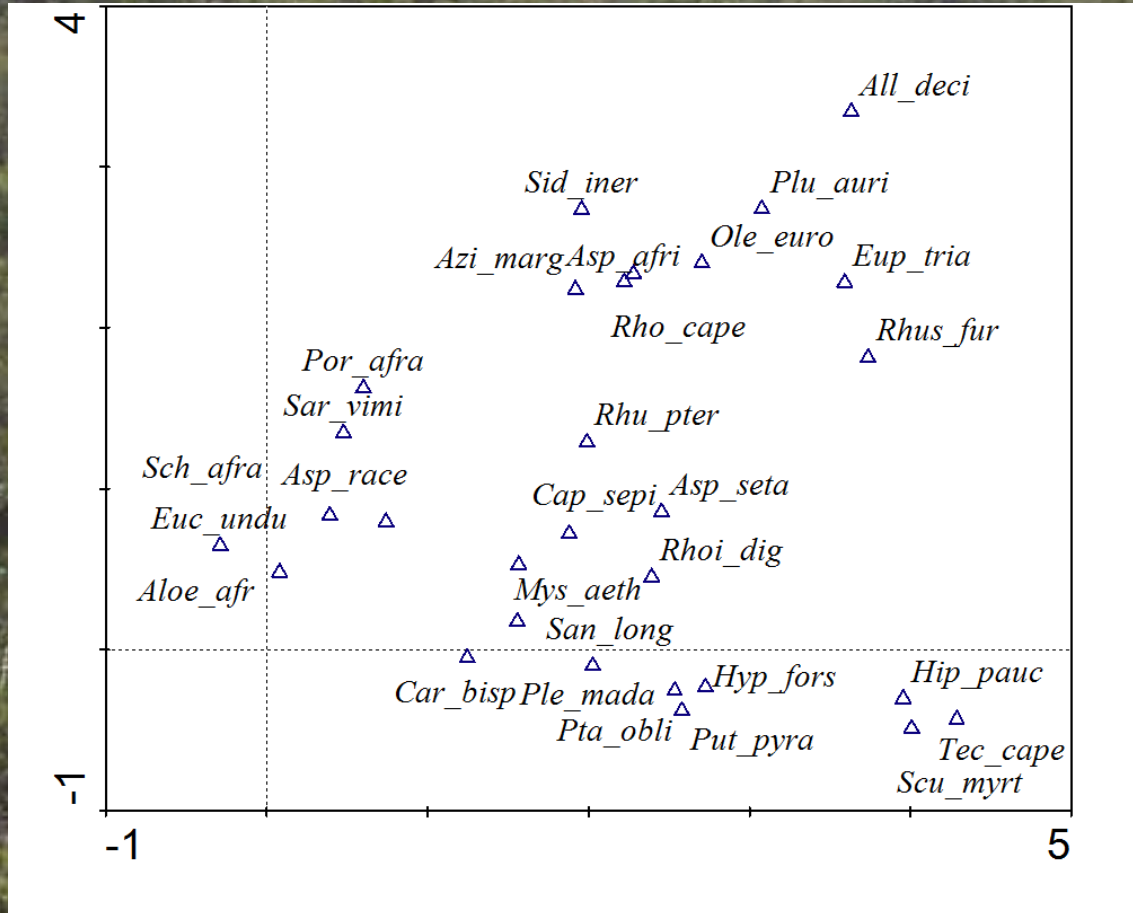


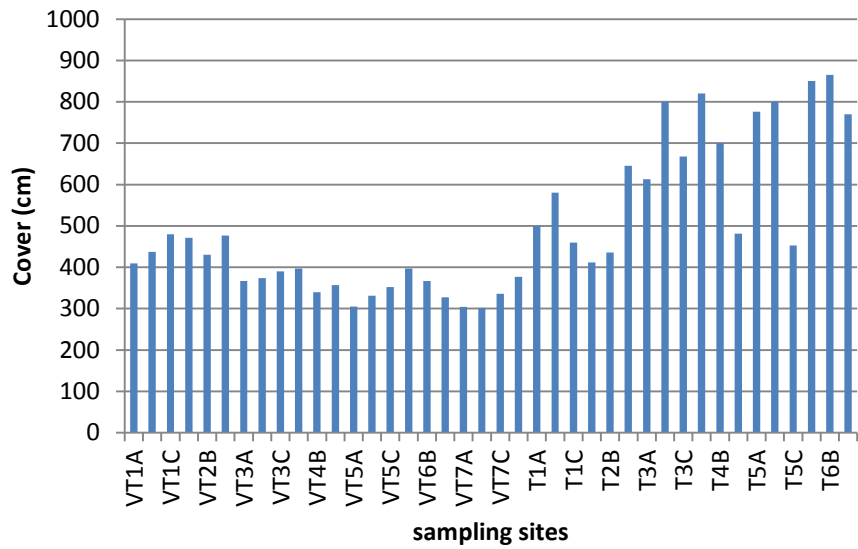
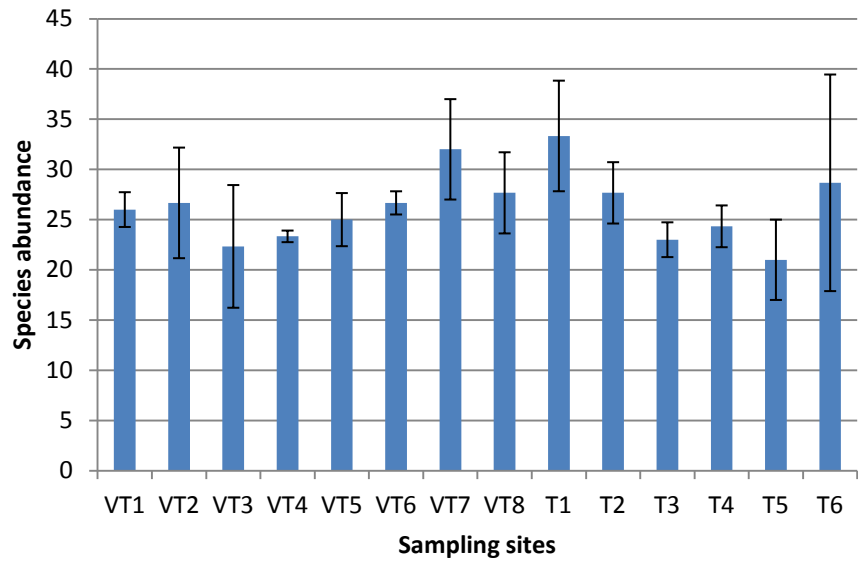
# Results: Vegetation types



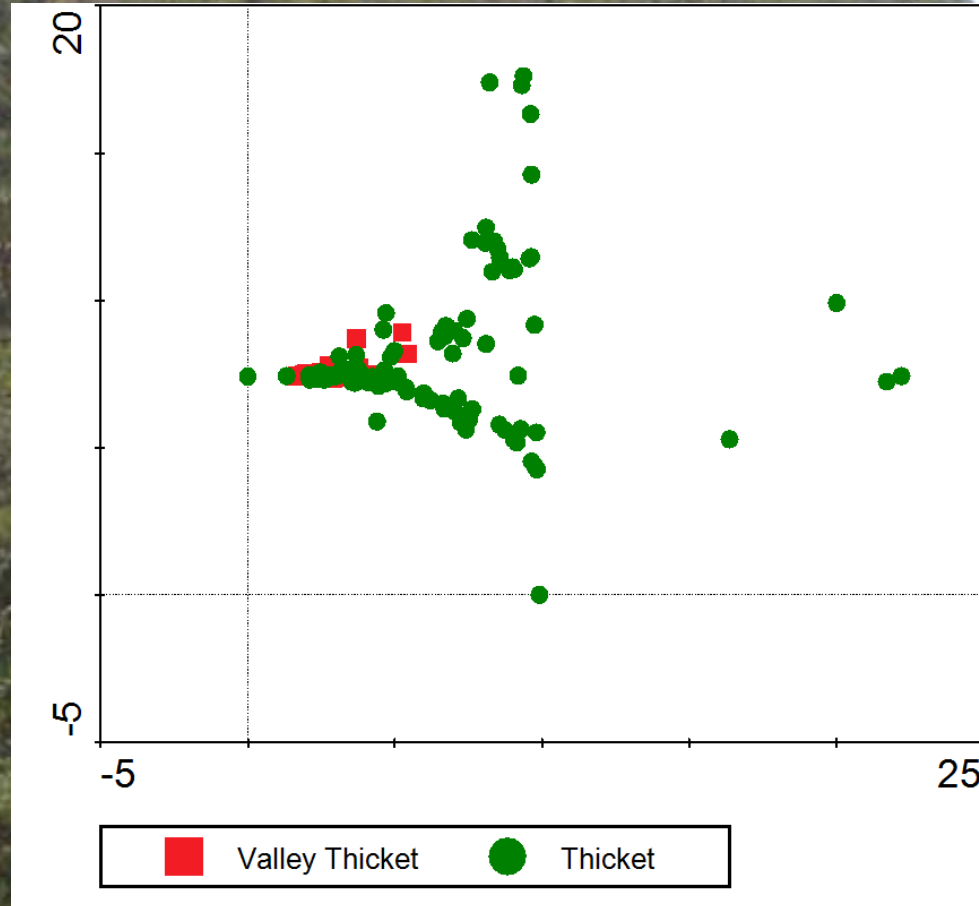
Cumulative % variance: 29.8  
Sum of all eigenvalues: 3.411

# Species



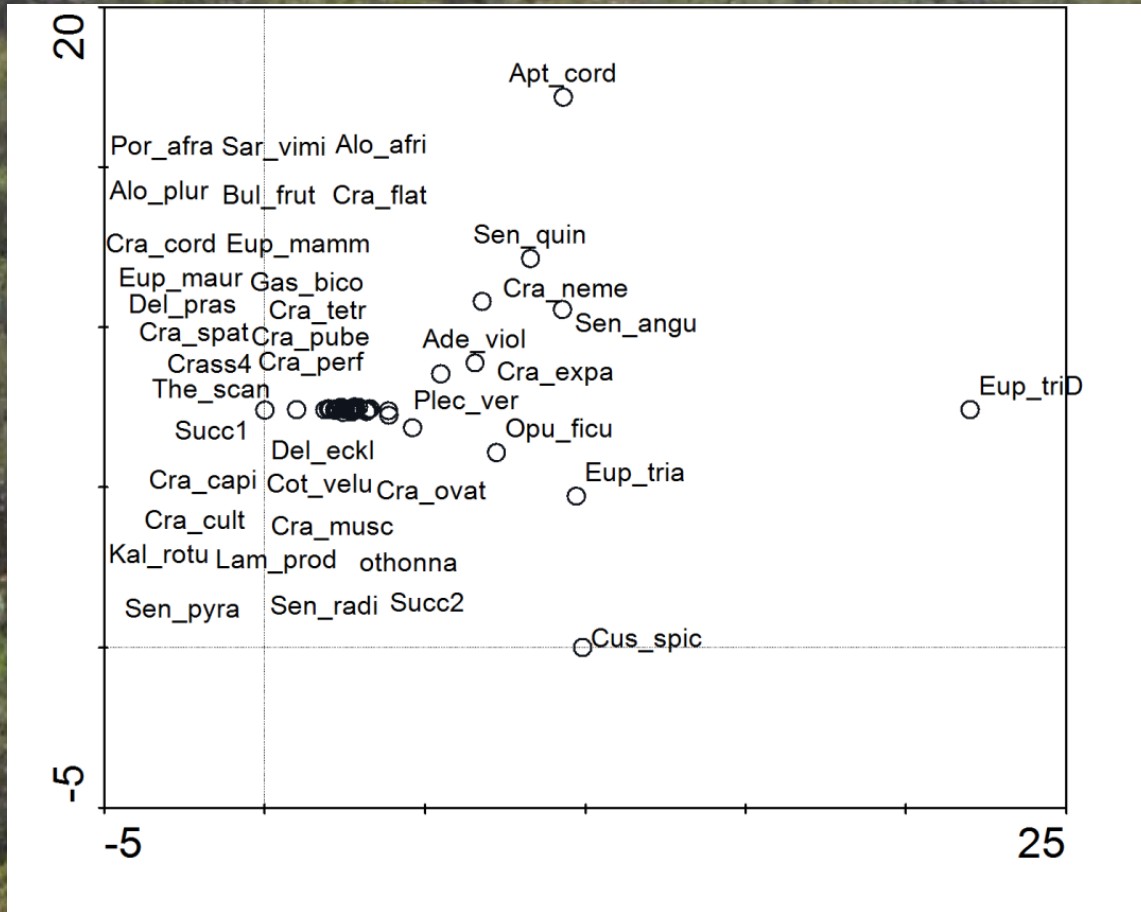


# Strip Transects: Samples



Cumulative % variance: 17.0  
Sum of all eigenvalues: 17.066

# Strip Transects: Species



# Discussion

Two vegetation types ARE different

Unique ecological parameters

Variable utilization by fauna

Individual management requirements

# Context



Baseline vegetation study of the two major solid Thicket types

Identify the effects of a high-density elephant population on 'pristine' Thicket

# Acknowledgements

- Prof. Eileen Campbell and Prof. Richard Cowling
- Botany dept,
- ACE and Zoology dept
- NMMU
- SANParks, GAENP: Tulani, Fire etc.





A photograph of a lush green hillside covered in dense vegetation, including various trees and shrubs. The sky is blue with some light clouds. A semi-transparent white rectangular box is overlaid on the lower half of the image, containing the text "Personal story".

# Personal story