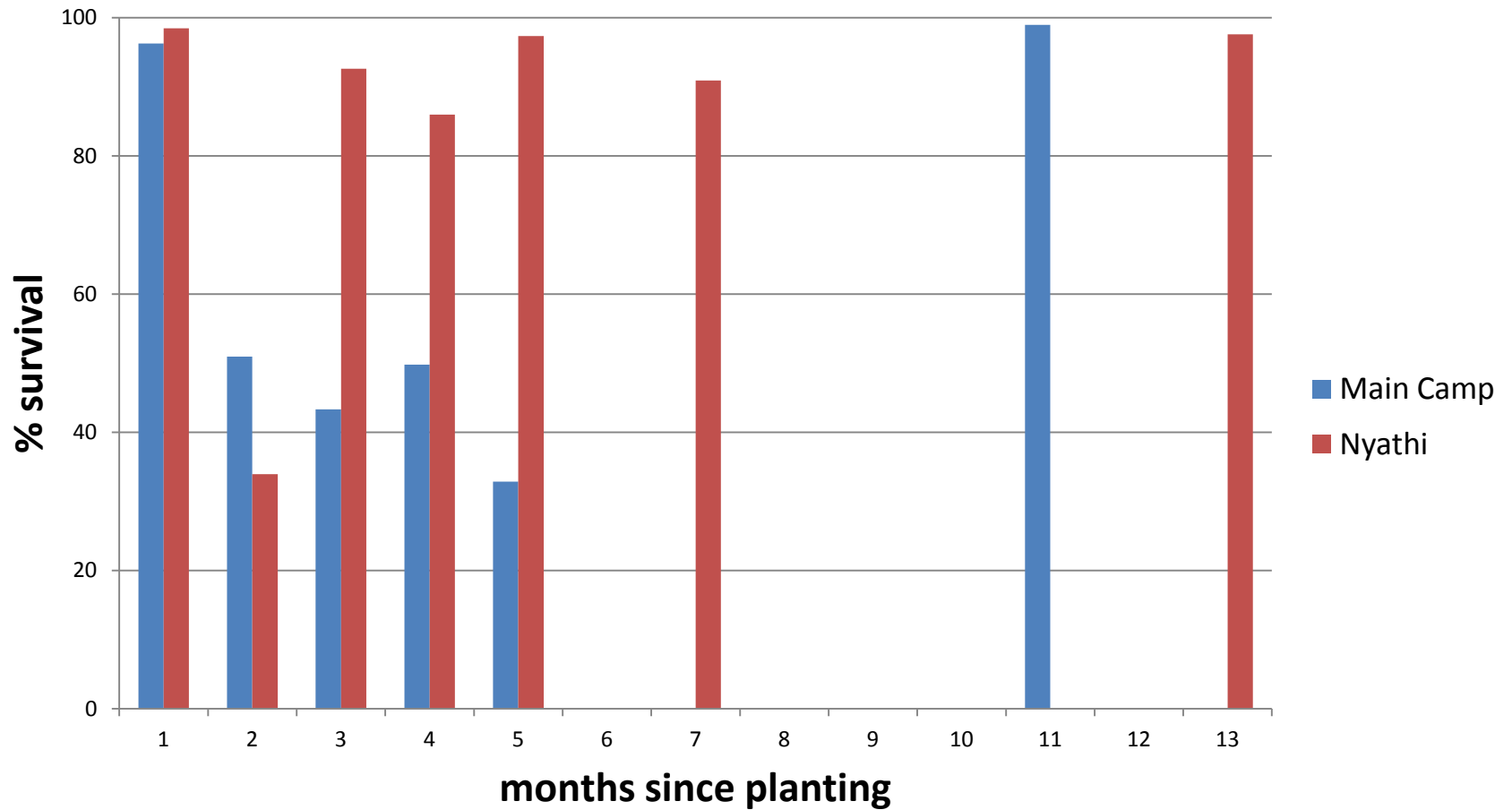


Preliminary monitoring results for  
Addo Elephant NP's spekboom  
planting initiative

Angela Gaylard

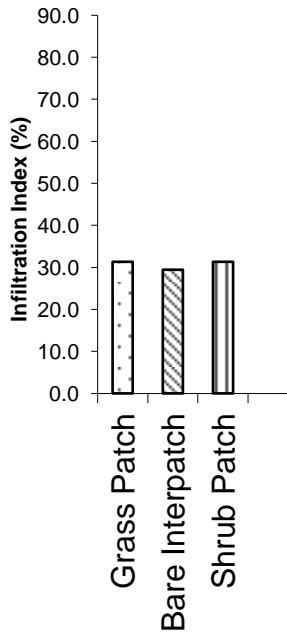
South African National Parks

# Survival rates

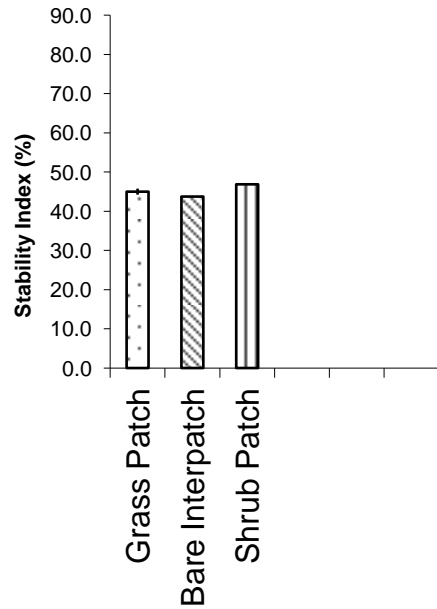


# Landscape Function Analysis

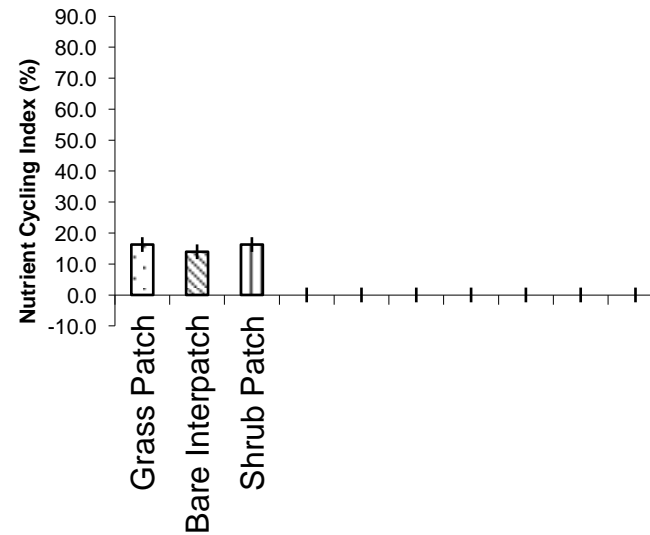
## Zone Infiltration



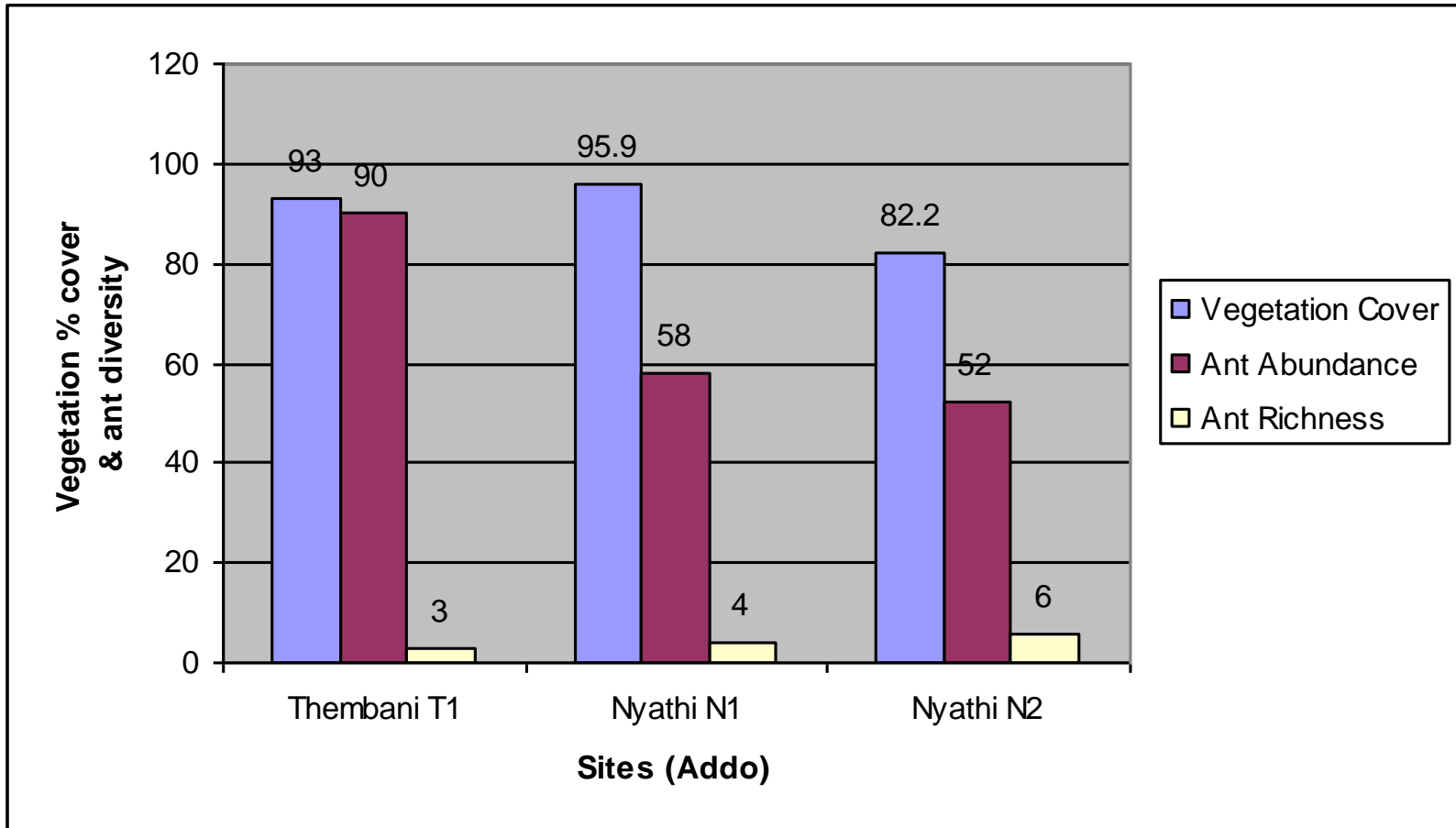
## Zone Stability



## Zone Nutrients



# Vegetation & ants



# LFA vs ant diversity results

|                             | <i>Veg cover</i>     | <i>Ant abundance</i> | <i>Ant richness</i> | <i>Stability</i>  | <i>Infiltration</i> | <i>Nutrients</i> |
|-----------------------------|----------------------|----------------------|---------------------|-------------------|---------------------|------------------|
| <u><i>Veg cover</i></u>     | 1                    |                      |                     |                   |                     |                  |
| <u><i>Ant abundance</i></u> | 0.45178718<br>9      | 1                    |                     |                   |                     |                  |
| <u><i>Ant richness</i></u>  | -<br>0.85991699<br>6 | -0.843870698         | 1                   |                   |                     |                  |
| <u><i>Stability</i></u>     | 0.71714664<br>4      | -0.297744655         | 0.260953825         | 1                 |                     |                  |
| <u><i>Infiltration</i></u>  | 0.82424651<br>8      | 0.877533371          | 0.997807144         | 0.1964<br>87      | 1                   |                  |
| <u><i>Nutrients</i></u>     | 0.99918614           | 0.415433992          | 0.838627869         | -<br>0.7446<br>75 | 0.80073<br>6        | 1                |