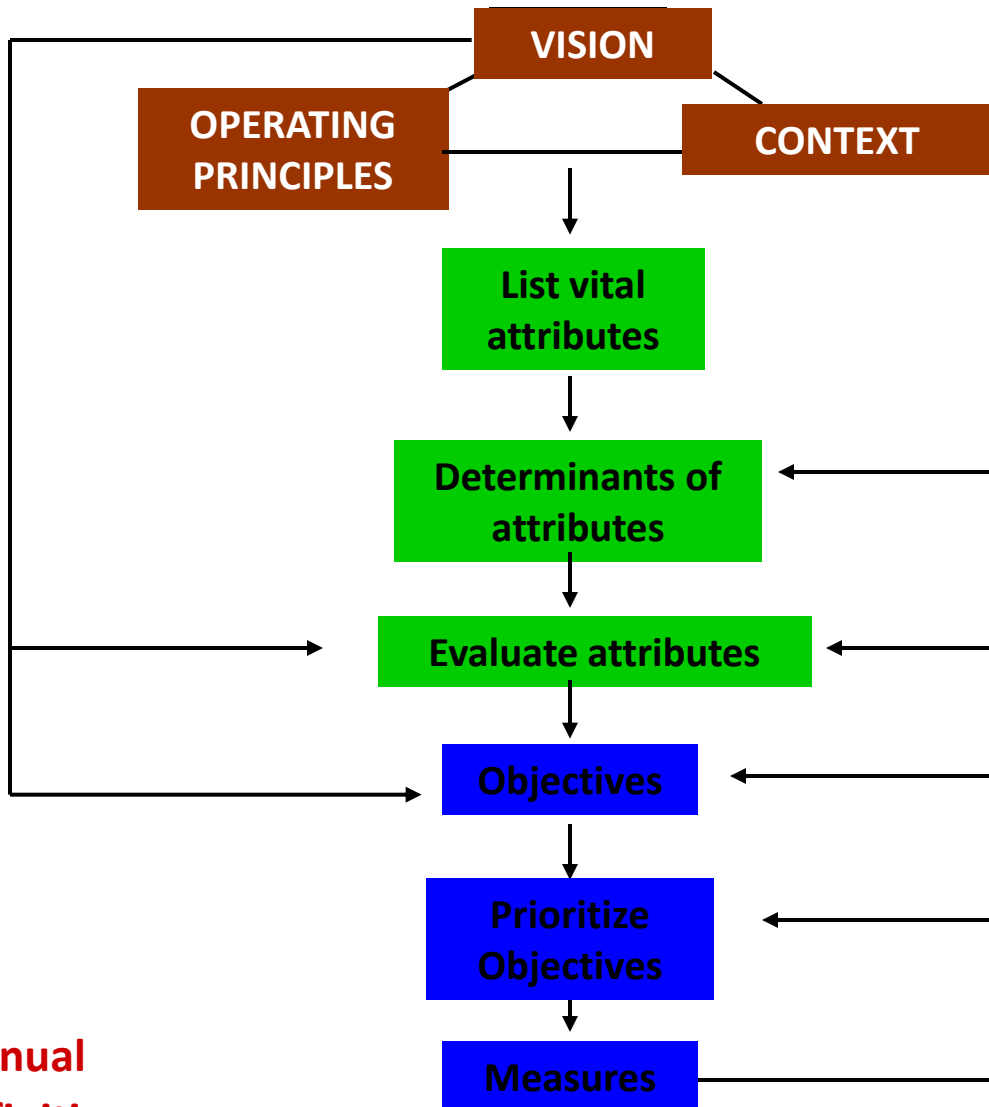


Aligning rehab with SANParks' strategic direction for biodiversity management

- “new” ecological paradigm – managing ecosystem processes (mimicking or restoring), recognising complexity, multiple successional pathways, non-linear dynamics, flux, resilience
- method of addressing uncertainty = Strategic Adaptive Management, including monitoring & feedback for explicit learning

Adaptive Planning Process



The decision making environment

Understanding the “V - STEEP” system to be managed

Where we want to go

★ Manual
★ Definitions

Fig 9

A Hierarchy of Objectives

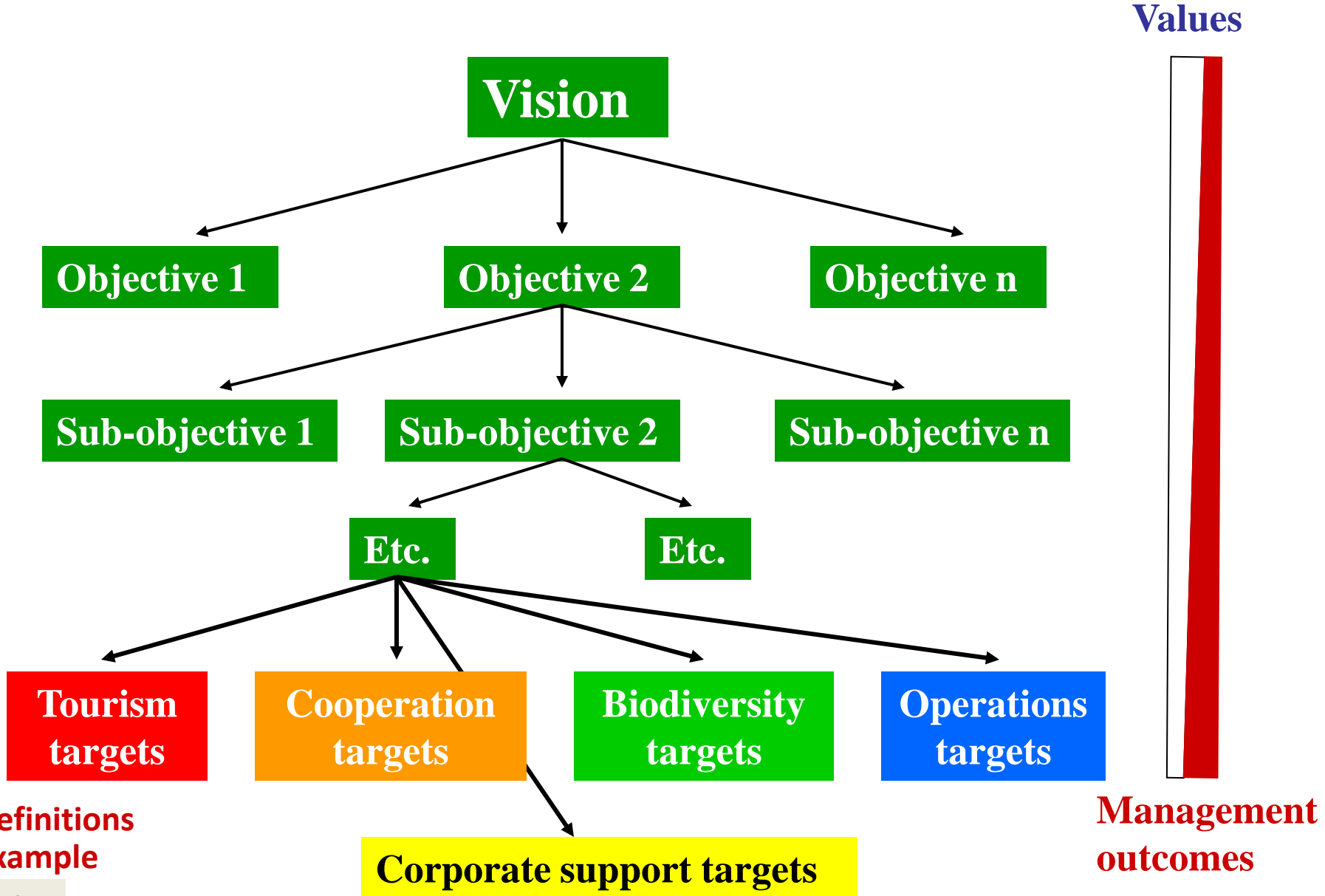


Fig 10

The Adaptive Management Process

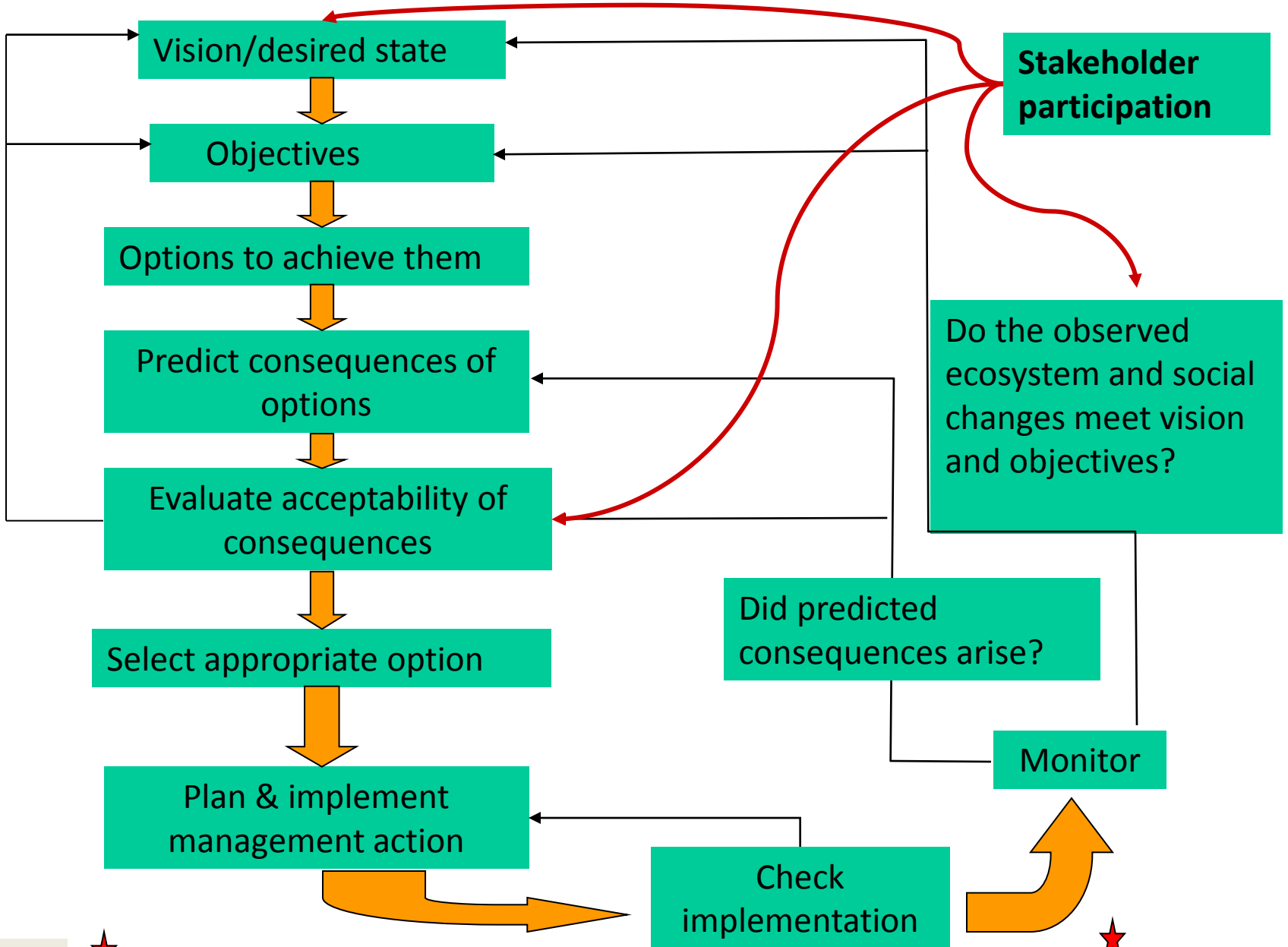


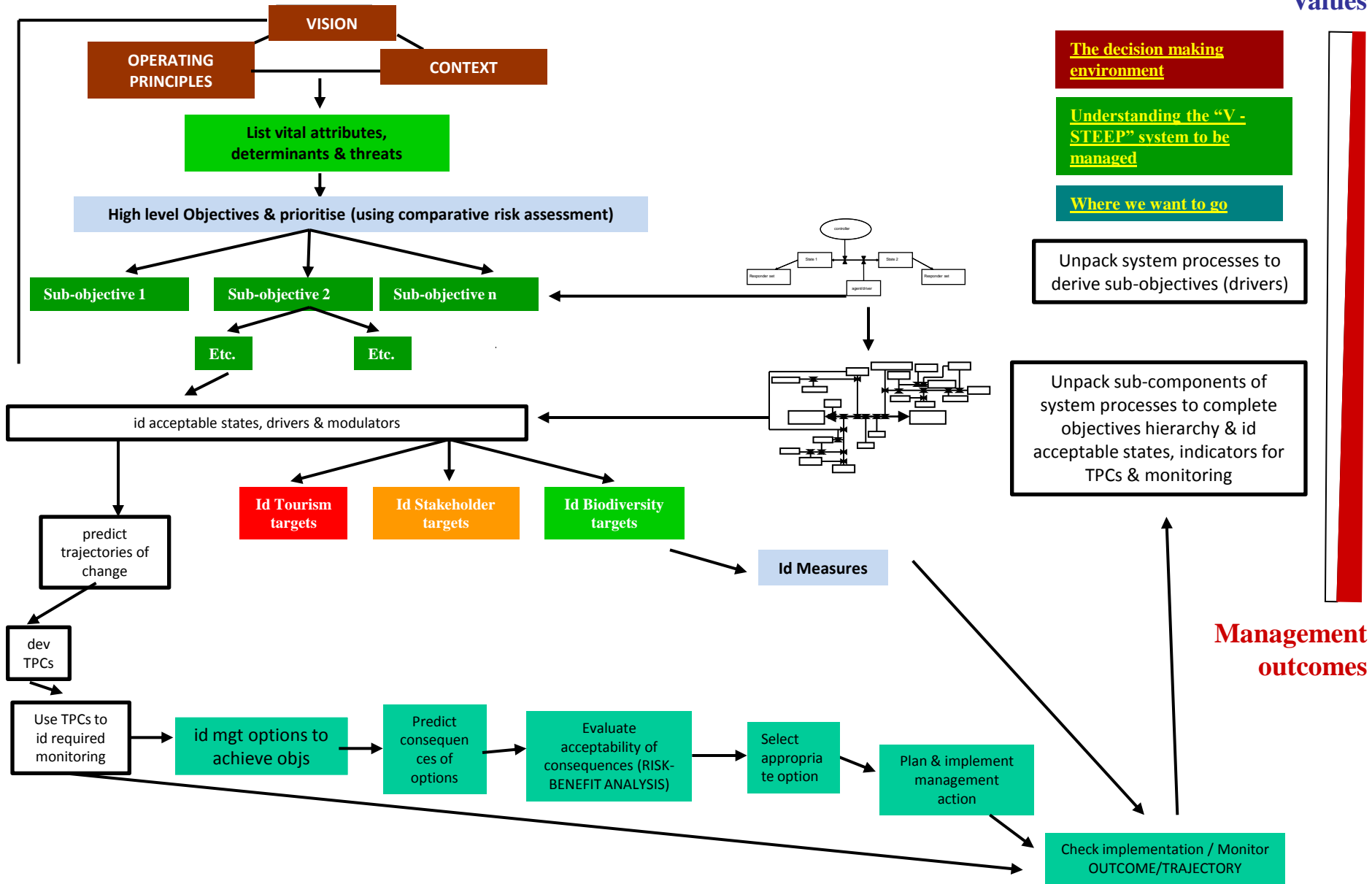
Fig 12

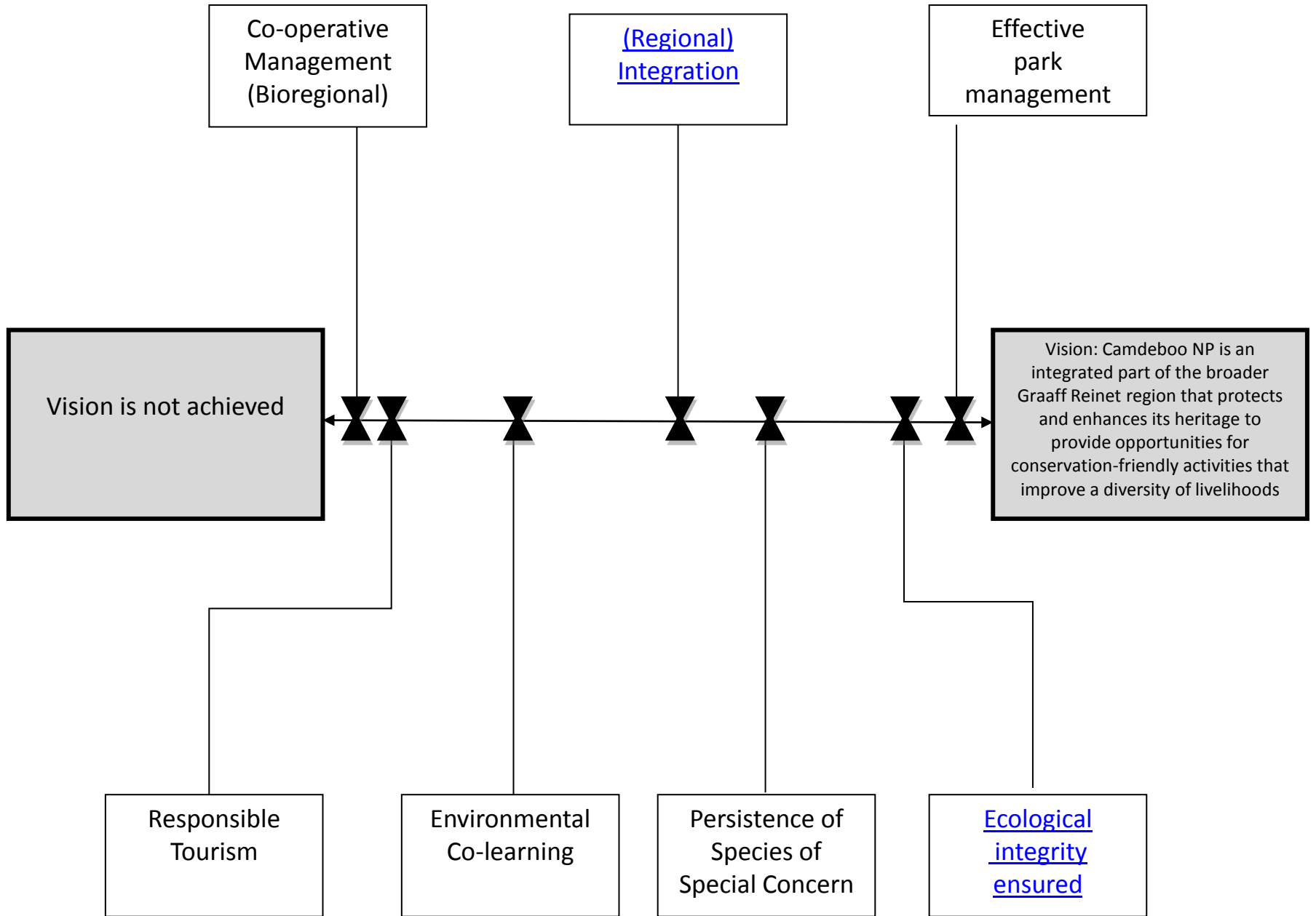
★ **More about Adaptive Management**

★ **Definitions**

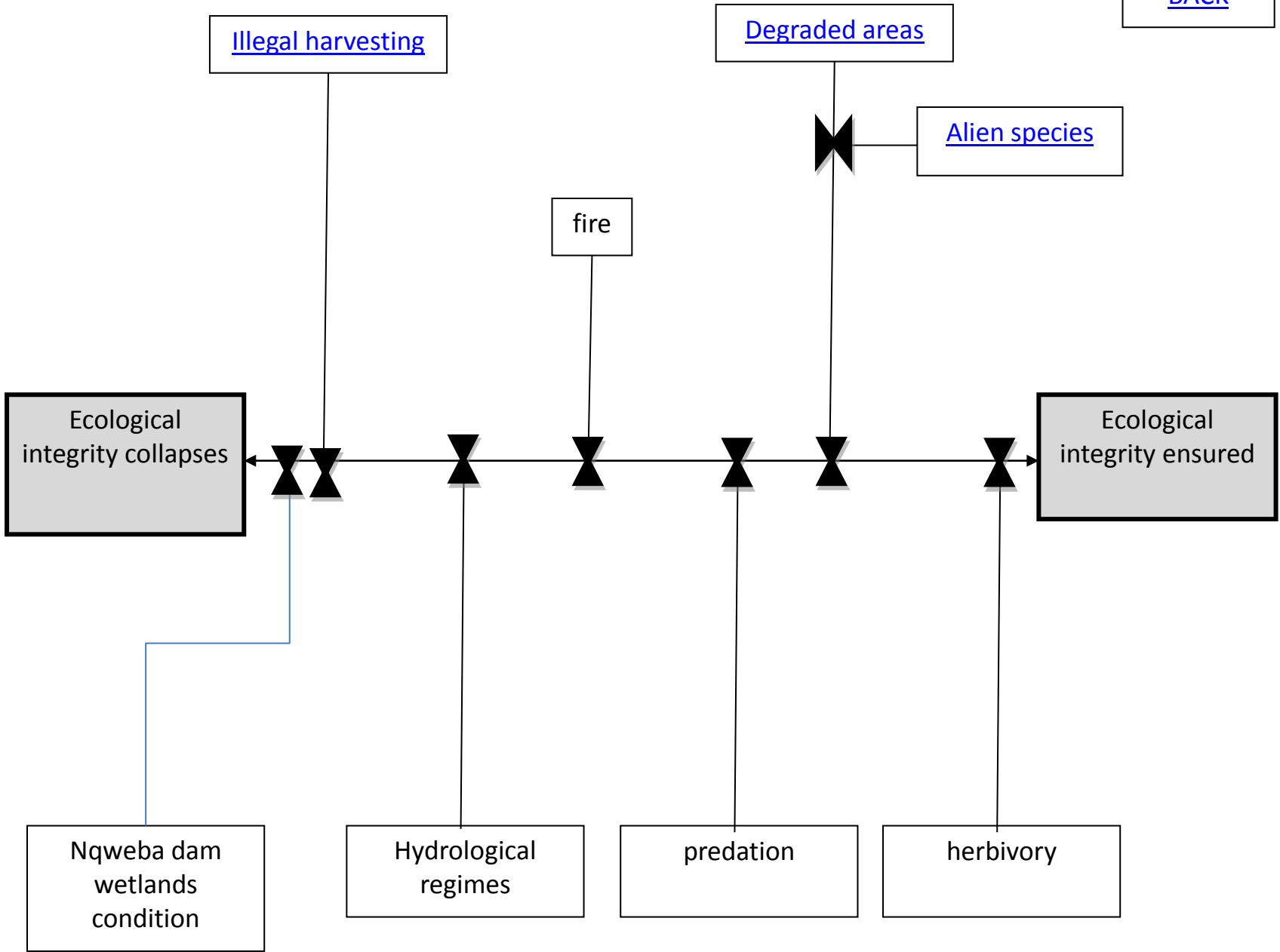
Adaptive Planning Process → Strategic Adaptive Mgt

Values





[BACK](#)



[Illegal harvesting](#)

[Degraded areas](#)

[Alien species](#)

fire

Ecological integrity collapses

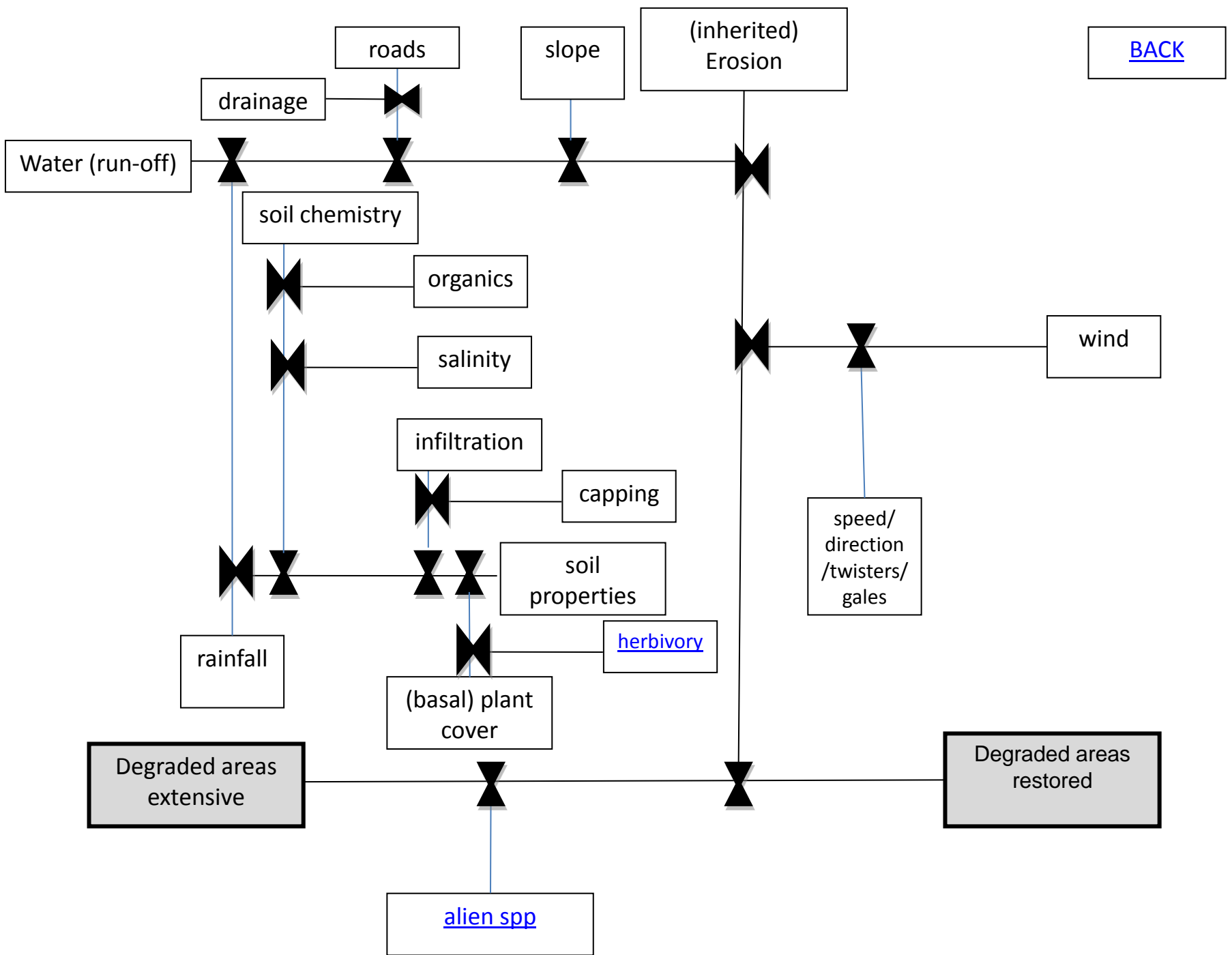
Ecological integrity ensured

Nqweba dam wetlands condition

Hydrological regimes

predation

herbivory



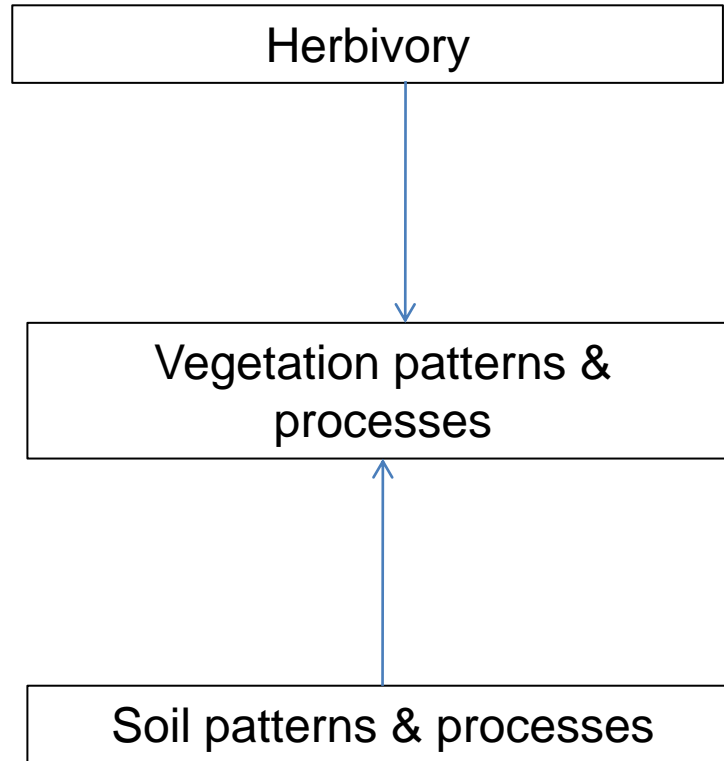
Mechanism diagrams:

- = joint mental model / hypothesis of how we think the system works
- ID gaps in knowledge
- ID “early warning signals” / things we can influence before an undesirable outcome has already been reached = TPCs
- Monitoring must then evaluate the TPC AND the outcome (early warning signal AND whether management option is working)

AERIAL SURVEYS, VEG
SURVEYS

VEGETATION SURVEYS

LFAs



Ensuring alignment with Strategic Adaptive Management

- Rehab plan should outline this conceptual framework to contextualise the work that will/should be done
- Monitoring of rehab work should align with processes / indicators identified in the mechanism diagrams
- then Targets and Actions