

<Practical Metadata/>

<Why it Makes a Difference/>

Gavin Fleming

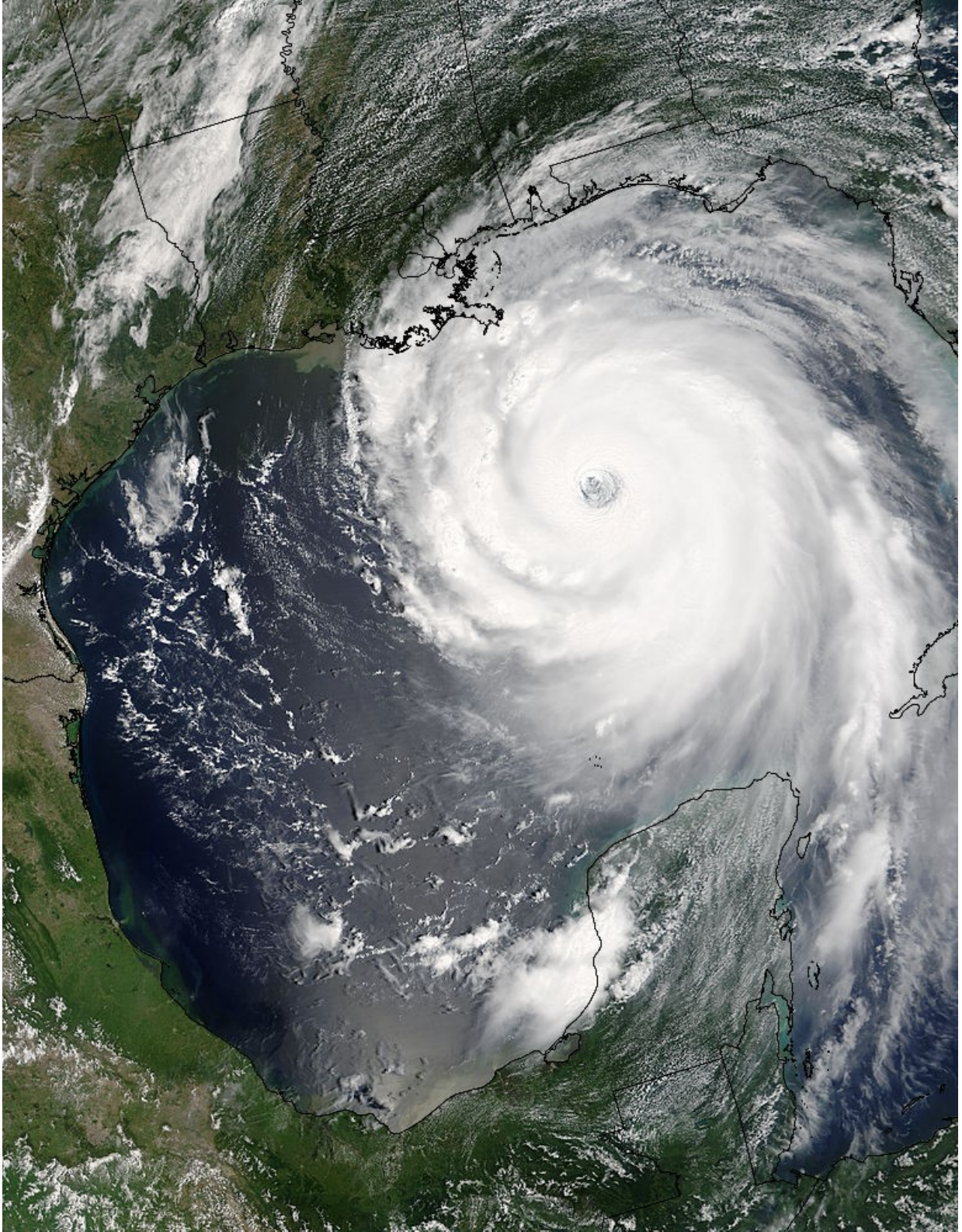
Information Management Scientist

SAEON



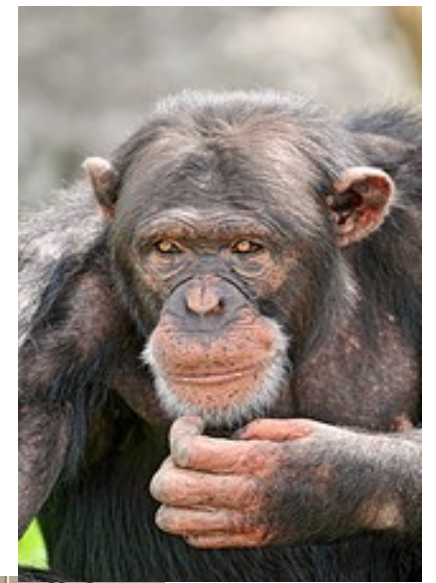




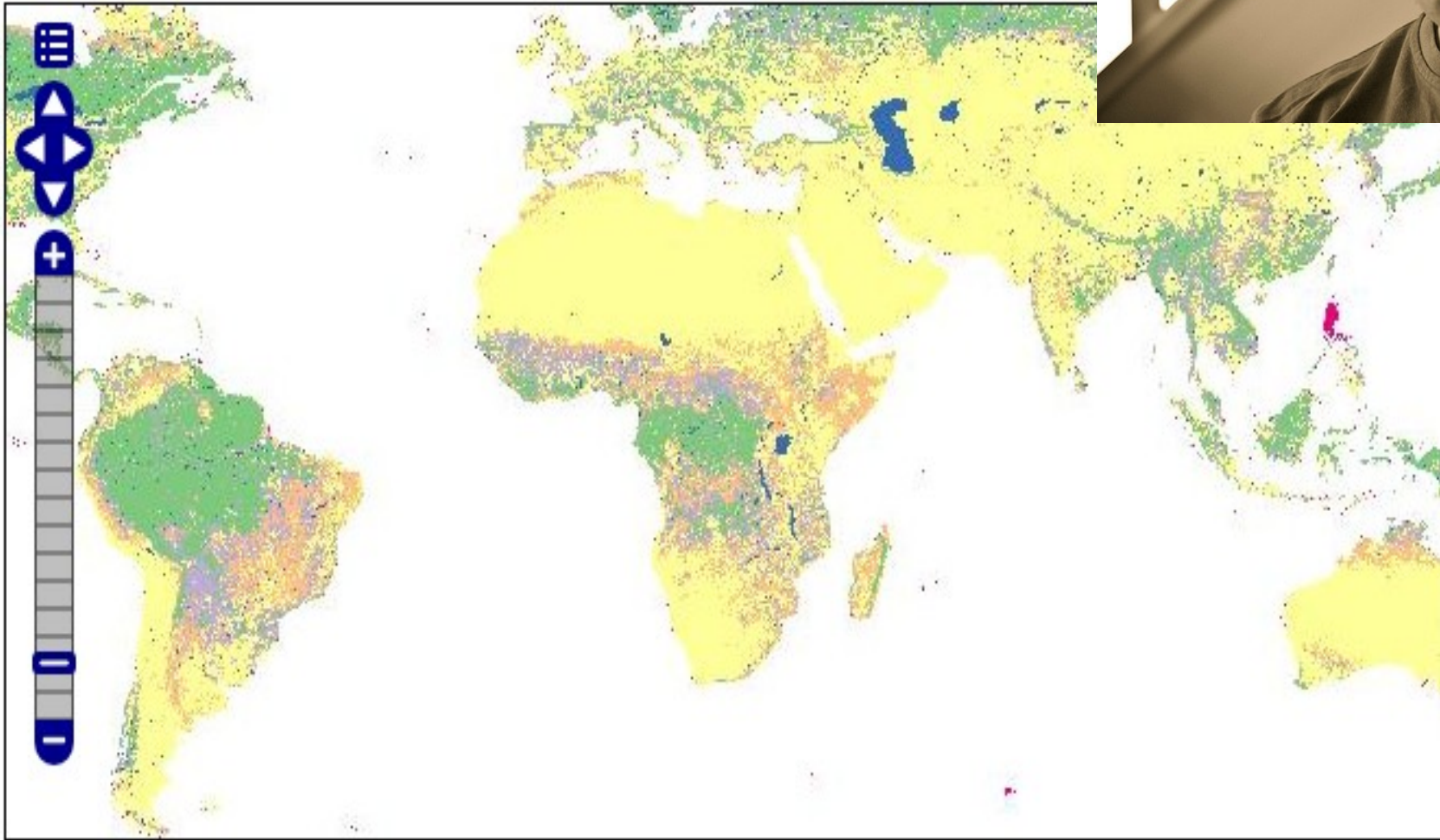




cutieeica.com



station_id character	device_co numeric(3)	method_co numeric(3)	standard_ numeric(3)	subdes_ character	spldattim timestamp	spldep numeric(7)	filtered character	disoxyger numeric(4)	salinity numeric(5)
EMD000001	1	1	1	LW	1980-11-11	0.000	U	7.22	35.800
EMD000001	1	1	1	MW	1980-11-11	0.000	U	7.22	35.500
EMD000001	1	1	1	HW	1980-11-11	0.000	U	6.73	35.600
EMD000001	1	1	1	SURFZ	1980-11-11	0.000	U	8.21	35.700
EMD000003	1	1	1	LW	1980-03-20	0.000	U	6.90	35.000
EMD000003	1	1	1	MW	1980-03-20	0.000	U	7.94	31.000
EMD000003	1	1	1	HW	1980-03-20	0.000	U	6.78	30.900
EMD000003	1	1	1	SURFZ	1980-03-20	0.000	U	8.29	33.300
EMD000004	1	1	1	LW	1980-03-20	0.000	U	9.55	35.200
EMD000004	1	1	1	HW	1980-03-20	0.000	U	6.90	35.400
EMD000004	1	1	1	MW	1980-03-20	0.000	U	6.34	35.100
EMD000004	1	1	1	SURFZ	1980-03-20	0.000	U	8.51	35.300
EMD000006	1	1	1	LW	1980-08-11	0.000	U	6.40	35.300
EMD000006	1	1	1	MW	1980-08-11	0.000	U	7.10	35.400
EMD000006	1	1	1	HW	1980-08-11	0.000	U	7.27	35.300
EMD000006	1	1	1	SURFZ	1980-08-11	0.000	U	8.83	35.100



```
<gmd:MD_Metadata xmlns:gts="http://www.isotc211.org/2005/gts"
xmlns:gml="http://www.opengis.net/gml" xmlns:xsi="http://www.w3.org/2001/XMLSchema-instance"
xmlns:gco="http://www.isotc211.org/2005/gco" xmlns:gmd="http://www.isotc211.org/2005/gmd">
  <gmd:fileIdentifier>
    <gco:CharacterString xmlns:gmx="http://www.isotc211.org/2005/gmx"
xmlns:srv="http://www.isotc211.org/2005/srv">64e2bc87-29f5-4756-b43b-
a339b947f201</gco:CharacterString>
  </gmd:fileIdentifier>
  <gmd:language>
    <gco:CharacterString>eng</gco:CharacterString>
  </gmd:language>
  <gmd:characterSet>
    <gmd:MD_CharacterSetCode codeListVali
codeList="http://www.isotc211.org/2005/resources/c
</gmd:characterSet>
  <gmd:contact>
    <gmd:CI_ResponsibleParty>
      <gmd:individualName gco:nilReason=
        <gco:CharacterString/>
      </gmd:individualName>
      <gmd:organisationName>
        <gco:CharacterString>SANBI</gc
      </gmd:organisationName>
      <gmd:positionName gco:nilReason="n
        <gco:CharacterString/>
      </gmd:positionName>
      <gmd:contactInfo>
        <gmd:CI_Contact>
          <gmd:phone>
            <gmd:CI_Telephone>
```





European Commission INSPIRE Geoportal

Contact | Legal notice



EUROPEAN COMMISSION > INSPIRE GEOPORTAL > Viewer

- [Home](#)
- [Discovery](#)
- [Viewer](#)
- [Metadata Editor](#)
- [Metadata Validator](#)

- Technical**
- [INSPIRE SOAP primer for INSPIRE Discovery and View Services providing simple examples of the proposed INSPIRE SOAP framework and additional clarifications](#)
 - [INSPIRE View Service Technical Guidance \(Version 2.0\)](#)
 - [Proposals for the documentation of the communication of the view and discovery service using the Web Service Description Language](#)
 - [Technical Report: INSPIRE NETWORK SERVICES SOAP Framework](#)
 - [Technical Report: SOAP HTTP Binding Status - Survey on OGC and ORCHESTRA Specifications](#)

Tools <<

Layer Tree -

World Generic Map Service with

Map

Projection WGS84 Cursor Longitude 19.844 Cursor Latitude 33.865



More functions

Add Layers -

Find Layers Select a Service World Generic Map Service with EuroGlob...

Search: Enter one or more words then press enter

BROWSE RESOURCES
BY SOCIETAL BENEFIT
AREAS



DISASTERS



HEALTH



ENERGY



CLIMATE



WATER



WEATHER



ECOSYSTEMS



AGRICULTURE



BIODIVERSITY

WELCOME TO GEOPORTAL

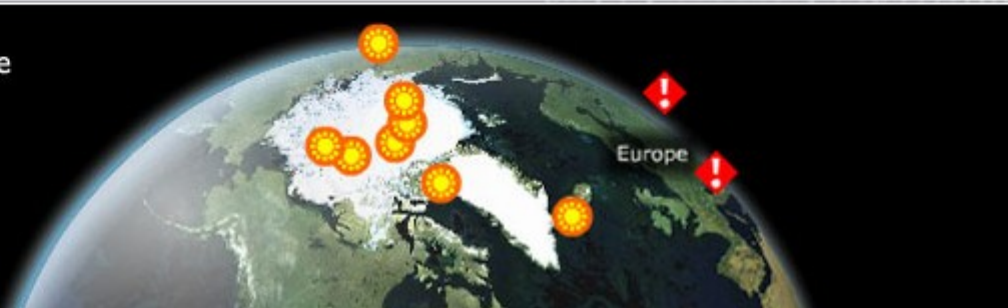
The GEOPortal provides an entry point to access remote sensing, geospatial static and in-situ data, information and services.

[More ...](#)

The GEOPortal provides three main ways to initiate a search for GEOS resources:

1. **Free Text** - Entering terms into the search field in the title bar
2. **Browsing via Societal Benefit Areas** - Filtering resources in the left side menu according to the GEOS Societal Benefit Areas
3. **Location** - Selecting a location on the interactive globe (click to activate) also displaying latest GEO related items

Click to browse
resources by
location



Provide Feedback
to GEO

➔ **GEOS Common Infrastructure**

➔ **About GCI**

➔ **Register your Resources**

➔ **About Registries**

➔ **Components & Services**

➔ **Standards & Interoperability**

➔ **Best Practices Wiki**

➔ **GEO Secretariat**

➔ **Overview**

➔ **News**



Data portal
SAEON
South African Environmental
Observation Network

GeoNetwork
Opensource



Morpho
Data Management for Ecologists



Browse



- Home
- Communities
- Metadata
- Documentation
- Sample Data
- Components

You are here: Home → Metadata → SAEON → MetadataCollection

Navigation

SAEON

Communities

Metadata

Council for Geoscience

SAEON

Logs

MetadataCollection

Archive

MetadataCollection

MetaCat Ndlovu

MetaCat Elwandle

MetaCat SAEON

ADU

SAEON

- Contents
- View
- Edit
- Rules
- Sharing

Actions ▾ Display ▾ Add new... ▾ State: Publ

MetadataCollection

by [admin](#) — last modified Jun 22, 2009 03:06 PM

Title	Author	Type	Modified
Archive	admin	Archive	May 26, 2009 12:51 PM
MetadataCollection	admin	Collection	Jun 22, 2009 02:58 PM
Monthly bird lists and bird arrival dates, Birmingham, Timbavati	SAEON Systems Administrator	Metadata	Mar 12, 2010 03:38 PM
Manyeley vegetation surveys 1989-1991	SAEON Systems Administrator	Metadata	Aug 03, 2010 10:17 AM
Nest mounds of the granivorous harvester ant <i>Messor capensis</i> , Tierberg, 1991 -2005	SAEON Systems Administrator	Metadata	Mar 12, 2010 04:01 PM
Rainfall data for Manyeleti Nature Reserve 1985-2000	SAEON Systems Administrator	Metadata	Mar 12, 2010 04:01 PM
Andover game Counts, 1983-2003	SAEON Systems Administrator	Metadata	Mar 12, 2010 04:01 PM
Aerial game counts	SAEON Systems Administrator	Metadata	Aug 03, 2010 10:13 AM
Temperature data - Antares Field Guide Training Centre, Balule North Nature Reserve	SAEON Systems Administrator	Metadata	Mar 12, 2010 05:16 PM
Climatic data for Phalaborwa 1960-2007	SAEON Systems Administrator	Metadata	Mar 12, 2010 05:16 PM
Quality measures on and off <i>Messor capensis</i> mounds	SAEON Systems Administrator	Metadata	Mar 12, 2010 05:16 PM
Rainfall - Birmingham Farm, Timbavati	SAEON Systems Administrator	Metadata	Mar 12, 2010 05:16 PM
Manyeleti Nature Reserve Game Count	SAEON Systems Administrator	Metadata	Mar 12, 2010 05:16 PM

Search

You are here: Home → Communities → Open Community → Search

Navigation
Search Setup
[Manage portlets](#)

Contents View Edit Metadata Data Rules Sharing

Search For Metadata on Open Community

[Click here if you want the Data Search perspective.](#)

or Pick another community search page: --Select another community search page--

Common Metadata Fields Spatial Fields Metadata Standards

Common Metadata Fields

Title

Date ...

Keywords

Available:

Selected:

Add >
< Remove

New Value: > Add New Value

Abstract

Organization

Language

Create and edit



Home

Communities

Metadata

Documentation

Sample Data

Components

You are here: Home → Metadata → SAEON → MetadataCollection → [...]

Navigation

SAEON

Communities

Metadata

Council for Geoscience

SAEON

Logs

MetadataCollection

Archive

MetadataCollection

MetaCat Ndlovu

MetaCat Elwandle

MetaCat SAEON

ADU

Add Metadata

Default ■ Categorization Dates Ownership Settings

Title ■

Description

A short summary of the content.

Xml ■

Metadata Type ■



South African Environmental Observation Network



A comprehensive, sustained, co-ordinated and responsive South African Earth observation network that delivers long-term reliable data for scientific research and informs decision-making for a knowledge society and improved quality of life.

saeon

repository

login join

data repository nodes

All Nodes

SAEON

Arid Zone SAEON Node

Egagasini SAEON Node

Elwandle SAEON Node

Fynbos SAEON Node

Grassland, wetland and forests SAEON Node

Ndlovu SAEON Node

SANParks

Addo Elephant National Park

Agulhas National Park

Augrabies Falls National Park

Bontebok National Park

Camdeboo National Park

Golden Gate Highlands National Park

Welcome to the SAEON Data Repository. This is the primary source for comprehensive information about scientific and research data sets collected throughout the South African Environmental Observation Network.

Search for SAEON Data

Searching: All Organizations

The repository search system is used to locate data sets of interest by searching through existing registered data sets. Presently the search covers all fields, including author, title, abstract, keywords, and other documentation for each data set.

Use a '%' symbol as a wildcard in searches (e.g., '%herbivore%' would locate any phrase with the word herbivore embedded within it).

Search

Search all fields (slower)

-Or-

Browse all existing data sets by title. This operation can be slow.

Browse All

log in

User name

Organization

Password

Login

New user?

data package upload

You must be logged into your user account before uploading a data set.



South African
NATIONAL PARKS
Parks A-Z

All

SANParks

- ▼ All
- ▼ Addo Elephant National Park
- ▼ Agulhas National Park
- ▼ Augrabies Falls National Park
- ▼ Bontebok National Park
- ▼ Camdeboo National Park
- ▼ Golden Gate Highlands National Park
- ▼ Karoo National Park
- ▼ Kgalagadi Transfrontier Park
- ▼ Knysna National Lake Area
- ▼ Kruger National Park
- ▼ Mapungubwe National Park
- ▼ Marakele National Park
- ▼ Mokala National Park

SANParks South African National Park Data Repository



[Repository Home](#) [Register Data](#) [TPC Status](#) [TPC Workflows](#)

Welcome to the SANParks Data Repository. This is the primary source for comprehensive information about scientific and research data sets collected throughout the South African National Park System.

Search for SANParks Data

Searching: All Organizations

The repository search system is used to locate data sets of interest by searching through existing registered data sets. Presently the search covers all fields, including author, title, abstract, keywords, and other documentation for each data set.

Use a '%' symbol as a wildcard in searches (e.g., '%herbivore%' would locate any phrase with the word herbivore embedded within it).

Search all fields (slower)

-Or-

Browse all existing data sets by title. This operation can be slow.

Login (request an account...)

User name

Organization

Password

Data Package Upload

You must be logged into your user account before uploading a data set.

Nairobi Convention Clearinghouse



Protection, Management and Development
of the Coastal & Marine Environment
SOUTH AFRICA Clearinghouse

Nairobi Convention

[Home](#) | [Administration](#) | [Contact us](#) | [Links](#) | [About](#) | [Help](#) |

FIND INTERACTIVE MAPS, GIS DATASETS, SATELLITE IMAGERY AND RELATED APPLICATIONS

WHAT?

What?

Title

Abstract

Keywords

Map type

Digital Interactive

Hard copy Downloadable

Search accuracy

Precise Imprecise

WHERE?

lat (max)

long (min)

long (max)

lat (min)

Type

Region

WHEN?

Anytime

From To

Restrict to

Catalog

Group

Kind

Category

Options

Sort by

Hits per page

Output

GeoNetwork
OpenSource

Aggregate Results matching search criteria : 1-4/4 (page 1/1), 0 selected Sort by **Relevance**

Select : [all](#), [none](#) **actions on selection**



KWAZULU-NATAL CRUSTACEAN TRAWL DEMERSAL FISH BYCATCH DATA



Abstract Discontinuous onboard observer data based on subsamples. Data were collected from 1989 to 1992 and then from 2003 until present.
Keywords Component 2, Component 3, Component 5, Onboard observers, Effort, Yield, Catch, Species composition, Bottom trawl, Shallow water crustaceans, Deep water crustaceans, Depth, South Africa, KwaZulu-Natal



Metadata

Create **Edit** **Delete** **Privileges** **Categories** **Owner: bernadine**



SMALL PELAGIC FISH CATCH AND EFFORT DATA



Abstract Database of catch and effort of small pelagic species in South Africa. Most of the data fall outside the SWIOFP area except for intermittent sardine beach seine landings in KZN. Spatial Reso...
Keywords Component 4, Small pelagics, Fishing logbook, Effort, Catch, Size composition, Biological data, Seine nets, Sex, Maturity, South Africa



Metadata

Edit **Delete** **Privileges** **Categories** **Owner: bernadine**



LARGE PELAGIC FISH CATCH AND EFFORT DATA



Abstract Database containing the catch and effort data for the longline large pelagic fishery.
Keywords Component 4, Large pelagics, Fishing logbook, Effort, Catch, Size composition, Biological data, Longline, Sex, Maturity, South Africa



Default view

Advanced view

XML view

Reset

Save

Save and close

Check

Thumbnails

Cancel



Identification info

Title *

Alternate title

Date *

Date type *

Edition

Edition date

Identifier

Cited responsible party

Presentation form

Series

Other citation details

Collective title

ISBN

ISSN

Abstract *

The ISO19115 metadata standard is the preferred metadata standard to use. If unsure what templates to start with, use this one.

Purpose

Credit



Abstract The full database Dr Albrecht Gotz developed for his PhD.
Keywords fish, South Africa, Indian Ocean, Western

Owner: bruce
Create Edit Delete Privileges Categories

Metadata



Identification info

Title Albrecht Gotz PhD database
Date type **Publication**: Date identifies when the resource was issued
Presentation form **Digital table**: Digital representation of facts or figures systematically displayed, especially in columns
Abstract The full database Dr Albrecht Gotz developed for his PhD.
Status **Completed**: Production of the data has been completed

Point of contact

Individual name Albrecht Gotz Country South Africa
Organisation name SAEON Electronic mail address albrecht@saeon.ac.za
Role **Originator**: Party who created the resource OnLine resource <http://www.saeon.ac.za/saeon-elwandle-node>

Maintenance and update frequency **Not planned**: There are no plans to update the data
Descriptive keywords fish (theme).

Extent

Geographic bounding box

North bound latitude 30.5061
West bound longitude 30 East bound longitude
South bound latitude -45

You have chosen to open
Albrecht Gotz PhD.mdb
which is a: MDB file
from: <http://data.saeon.ac.za>
What should Firefox do with this file?
 Open with
 Save File
 Do this automatically for files like this from now on.

Distribution info

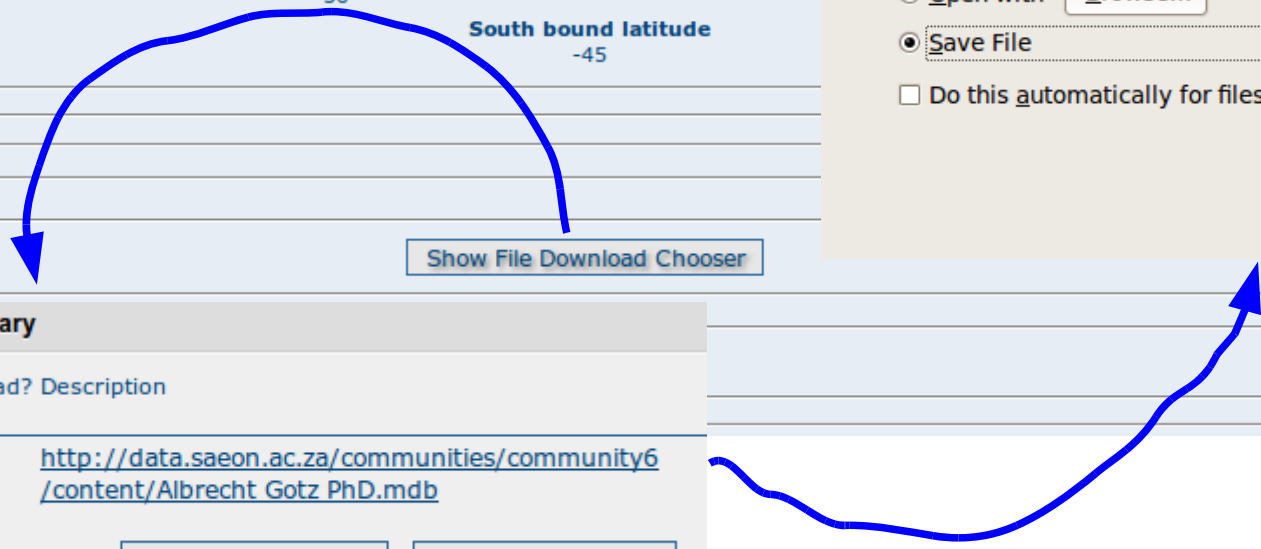
Download Summary

Show File Download Chooser

Transfer options

Download Summary

Type	Download?	Description
Remote	-	http://data.saeon.ac.za/communities/community6/content/Albrecht Gotz PhD.mdb





Data portal

SAEON

South African Environmental Observation Network




Protection, Management and Development of the Coastal & Marine Environment
SOUTH AFRICA Clearinghouse

Nairobi Convention



Nodes



South African Navy
Hydrographic Office





SADCO

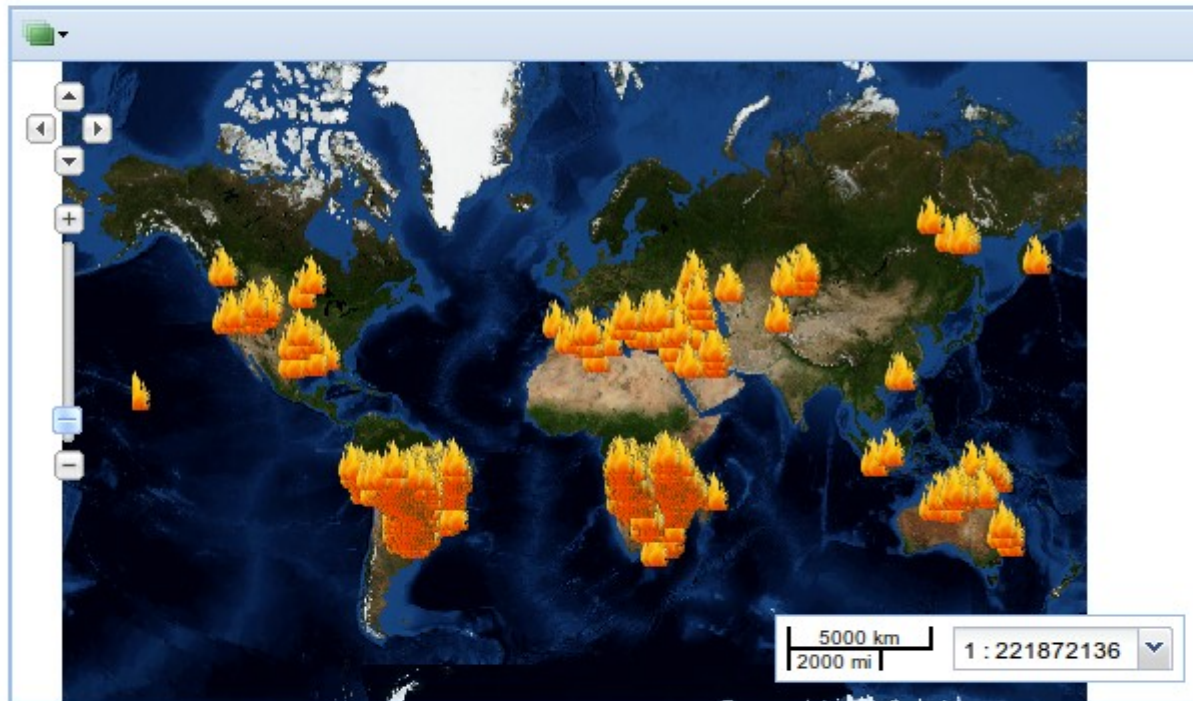
Southern African Data Centre for Oceanography



Central American Probabilistic Risk Assessment

MODIS_from_Aug_23

Abstract: Fires from <http://maps.geog.umd.edu/firms/shapes.htm> 24 hour from the world, accessed Aug 23, 2010



Type: Vector Data

Keywords:

Edition: None

Topic Category: location

Download

Data: [Zipped Shapefile](#) [GML 2.0](#) [GML 3.1.1](#) [CSV](#) [Excel](#) [GeoJSON](#) [JPEG](#) [PDF](#) [PNG](#) [KML](#)
[View in Google Earth](#)

Metadata: No metadata links provided for this data.

Maps

This layer is not currently used in any maps.

[Create new map](#)

Styles

The following styles are associated with this data set. Choose a style to view it in the preview to the left. Click on a style name to view or edit the style.

- Firesbright [SLD](#)
- Point [SLD](#)
- Fires [SLD](#)

So, good metadata is **essential** for data

Discovery

Awareness and usage

Understanding

Future-proofing

Quality assurance

**Make it part of your best practice.
It's in your own interest.**

SAEON data portal: <http://data.saeon.ac.za>

Nairobi Convention Clearinghouse: <http://saeonocan.co.za/geonetwork>

Photo credits (Flickr and Google images):

Dazed and confused: PhotoJonny

Binoculars: gerlos

Model: cutierica

Data: sterlingsolutions

Eureka: netstate.com