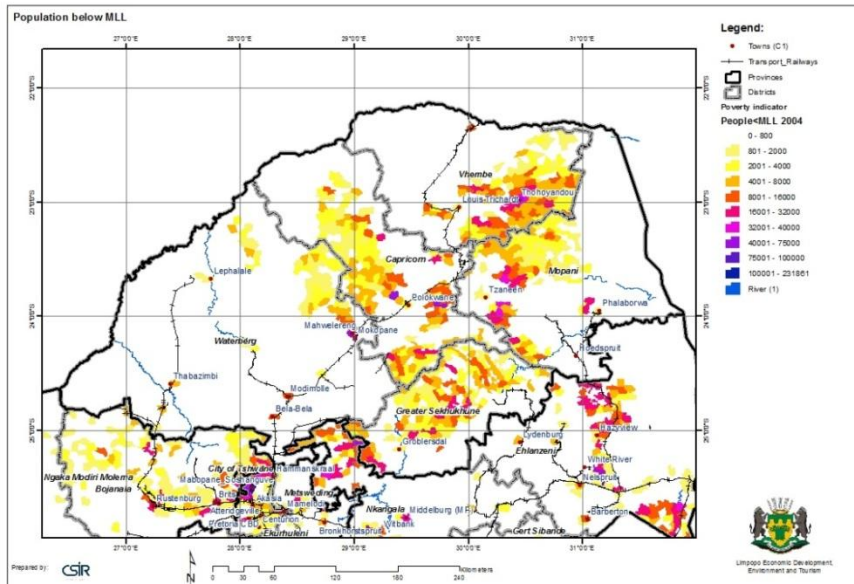


**THEME:****PERSONS BELOW MLL****CATEGORY:****DEMOGRAPHIC****Persons below the Minimum Living Level (MLL)**

This map is essentially a map of the estimated distribution of poverty in South Africa, based on the 2001 census data and magisterial district estimates for 2004 (source: Global Insight's 2004 Regional Economic Focus). The poverty levels are defined as the total number of people living in households with an income below the Minimum Living Level (MLL) or otherwise referred to as the poverty income. Poverty income is based on the Bureau of Market Research's Minimum Living Level (BMR report no. 235 and later editions, Minimum and supplemented Living Levels in the main and other selected urban areas of RSA, August 1996). These poverty incomes vary by household size (source: Global Insight's 2004 Regional Economic Focus).

A similar map and an extensive discussion of the reasons for, and significance of these patterns are provided in the 2006 update of the National Spatial Development Perspective (NSDP)\*.

\* Republic of South Africa, 2006 (first print, March 2007). National Spatial Development Perspective, Policy Coordination and Advice Services, The Presidency, Pretoria.

This map contains the following layers:

- Base layers

- Mesozones with MLL values
- Settlements

**Note: not all layers are active – the user must activate it to be visible.**

**Source(s):** Base layers from different sources including:

- CSIR Built Environment, 2013
- Quantec, 2009
- Demarcation Board, 2012
- Statistics South Africa, 2012