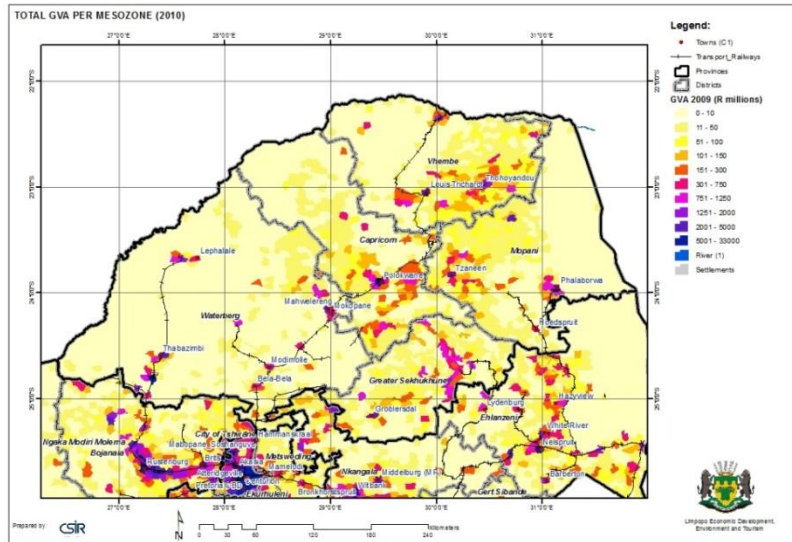


THEME:

TOTAL GVA PER MESOZONE

CATEGORY:

ECONOMIC



Overview of total economic activity and employment

This map (see below for further description) represents the most detailed available estimate of the spatial distribution of economic activity in South Africa, built up from estimates of the geographic spread of economic activity in 24 sub-sectors (for the year 2012).

Total GVA per mesozone

The concept of Gross Geographic Value Added (GVA) – which is used by the firm Global Insight as a basis for making estimates of regional economic activity – is broadly similar to what is more generally known as Gross Geographic Product (GDP). In essence:

$$GVA \text{ (factor cost)} = \text{Compensation of employees} + \text{Gross Operating Surplus}$$

This map represents an update of previous versions. The chosen attribute classification and colour scheme (see legend box) is intended to show the geometric increase of GVA as one moves from areas with less than R 1 million per mesozone (white and beige) to areas with more than R 1 billion per mesozone (see the purple range of colours).

As noted, the highest intensity areas (with more than R 1 billion GVA per mesozone) are indicated by a range of purple colours. These generally comprise major towns or metropolitan nodes, but some are also the locations of major power stations or industrial areas (such as the Secunda complex). The second colour band (the three red classes) typically includes medium-sized towns and significant non-metropolitan mining areas.

GIS related Metadata

To access metadata files on spatial layers used in this map, [follow this link](#).

This map contains the following layers:

- Base layers
- Mesozones with economic data
- Parks
- Elevation

Note: not all layers are active – the user must activate it to be visible.

Source(s): Base layers from different sources including:

- Department of Environmental Affairs, 2011
- Demarcation Board, 2012
- CSIR Built Environment, 2012
- Surveyor General, 2012
- Statistics South Africa, 2012