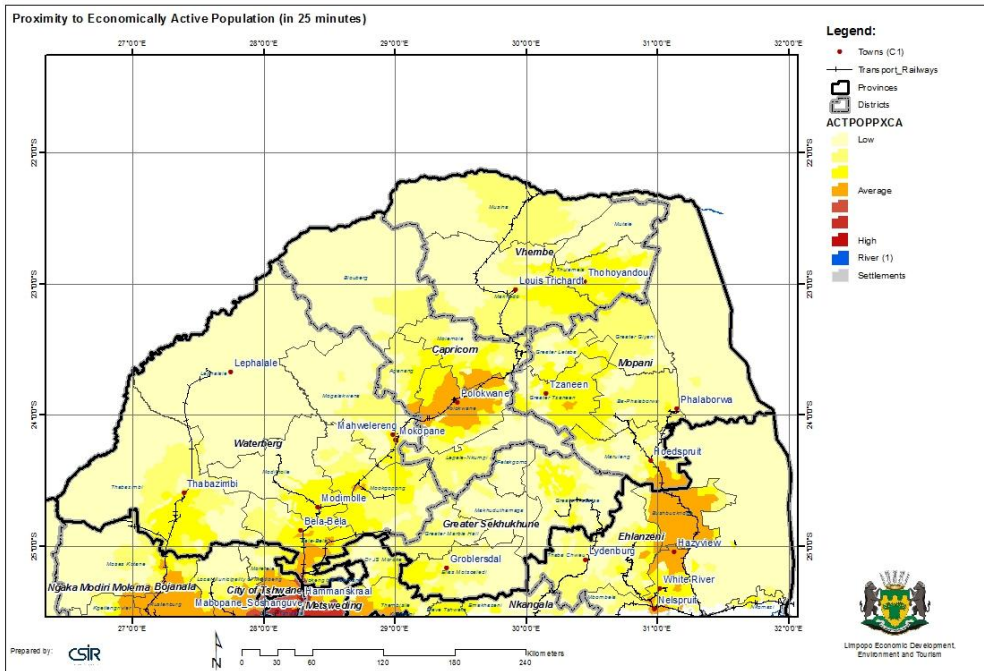


**THEME:**

**PROXIMITY TO ECONOMICALLY ACTIVE POPULATION.**

**CATEGORY:**

**ECONOMIC**



**Economically Active Population - within 25 minutes travel time**

The map indicates the distribution of economically active population within a travel time of 25 minutes. It is a good indication of the areas in which the potential labour force is concentrated.

The input data for this estimate includes:

- The (mesoframe-based) estimates of economically active population for 2007;
- The road network for South Africa with travel speed estimates.

This map contains the following layers:

- Base layers
- Mesozones with proximity data and EAP
- Parks
- Elevation

**Note: not all layers are active – the user must activate it to be visible.**

**Source(s):** Base layers from different sources including:

- Department of Environmental Affairs, 2011
- Demarcation Board, 2012
- CSIR Built Environment, 2012
- Surveyor General, 2012
- Statistics South Africa, 2012