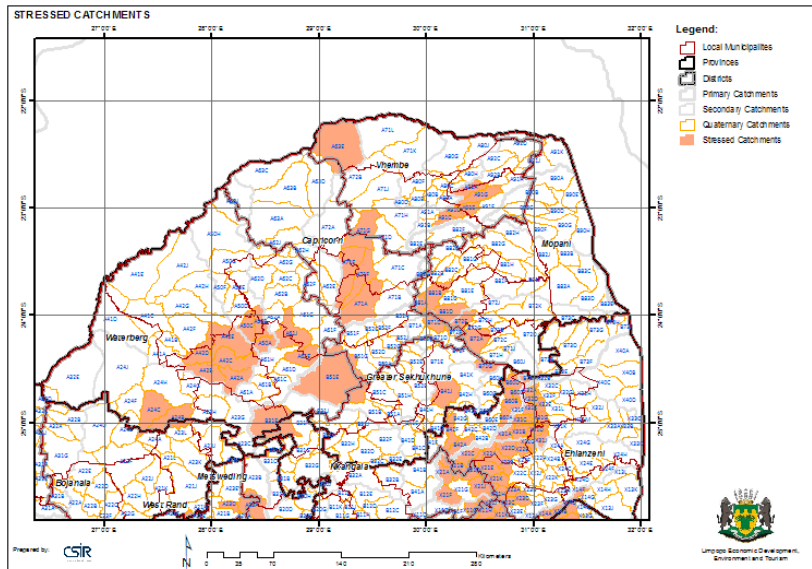


**THEME:**

**STRESSED CATCHMENTS**

**CATEGORY:**

**INLAND WATER**



A third of the world's people might have access to only half the water they need in the next decades if nothing is done on a sustainable basis right now. And South Africa is particularly vulnerable. The high amount of water usage in South Africa – as much as 25% of its renewable freshwater resources – puts it way above that of its sub-Saharan neighbours which results in stressed catchment. (Water stress is **when the amount of water used exceeds 10% of renewable resources**)

This map indicates stressed catchments.

This map contains the following layers:

- Primary, Secondary, Tertiary and Quaternary catchments
- River ecosystems status - an index placing the integrity of river ecosystems into four different categories
- Stressed Catchments
- Mesozones (base layer) – spatial unit type created for GAP for meso-level use.
- Basemap layerset – contains roads, administrative areas etc.

**Note: not all layers are active – the user must activate it to be visible.**

**Source:**

Department of Water Affairs and Forestry, DWAF.