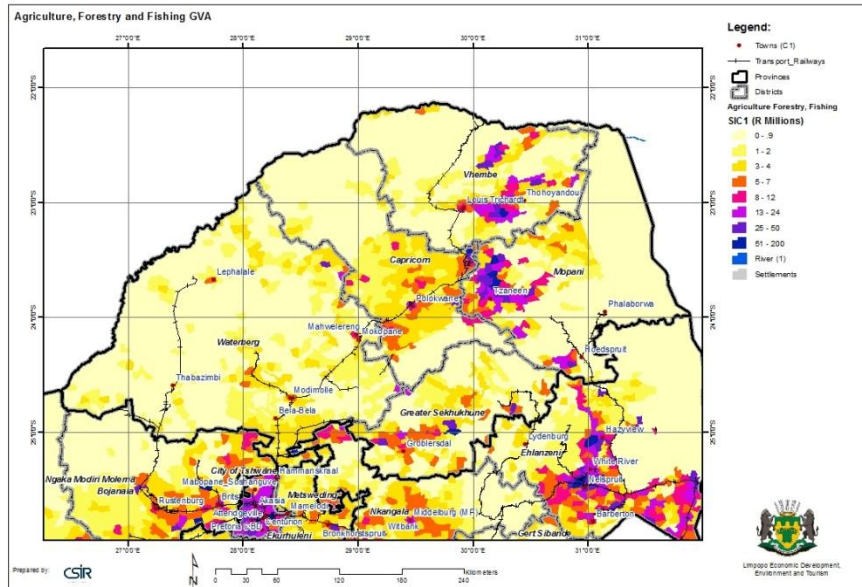


THEME:**MINING AND QUARRYING****CATEGORY:****ECONOMIC****Mining and quarrying GVA**

It should be noted that there are considerable year to year fluctuations in the value of mining activity, and that the effects of many new mining developments (such as around Burgersfort in the Sekhukhune District) might not be fully reflected by this map. Using the 2009 Quantec GVA values combined with a dasymetric mapping process the values was relayed to the mesozones. Several *weight layers* were used to obtain the mesoframe-based estimate of the spatial distribution of this sector. The location of operating mines was used as the main weight field to estimate the spatial distribution of mining activity (within each local municipality).

This map contains the following layers:

- Base layers
- Mesozones with sectoral attributes
- Settlements

Note: not all layers are active – the user must activate it to be visible.

Source(s): Base layers from different sources including:

- CSIR Built Environment, 2009
- Quantec, 2009
- Demarcation Board, 2012
- Statistics South Africa, 2012