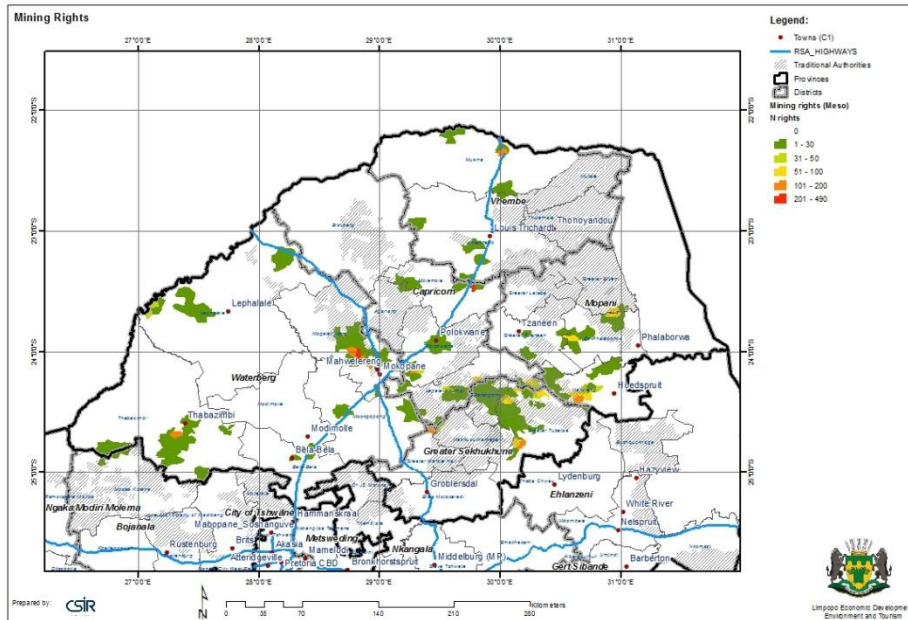


THEME:**MINING RIGHTS APPLICATIONS****CATEGORY:****LAND - MINING**

This map illustrates the distribution of application for mining rights in the Limpopo Province. The mining rights map gives an indication of where permission has been granted for the mining of minerals.

A mining right is the permission granted by the State through the Department of Mineral Resources which gives one the authority to mine minerals within a certain area.

A mining right may not exceed a period of 30 years.

A mining right is granted if:

- the mineral can be mined optimally
- the applicant has the funds and expertise to conduct the proposed mining operation optimally
- the financing plan is compatible with the intended mining operation and for the duration thereof
- no unacceptable pollution or damage to the environment will occur as a result of the mining operation
- the applicant has made financial and other provisions for the prescribed social and labour plan
- the applicant is not contravening the Mineral and Petroleum Resources Development Act, 2002 (Act No. 28 of 2002)
- the operation is in line with the Mining Charter.

[\[Source:](http://www.services.gov.za/services/content/Home/OrganisationServices/permitslicencesrights/Miningandwaterone/MiningRight/en_ZA)

http://www.services.gov.za/services/content/Home/OrganisationServices/permitslicencesrights/Miningandwaterone/MiningRight/en_ZA

The map was generated from data in spreadsheets downloaded from the Department of Mineral Resources website on 24 May 2011. The downloaded spreadsheets are dated 19 October 2010

This map contains the following layers:

Mining right applications per mesozone

Settlements – settlement polygons created by DWAF

Basemap layerset – contains roads, administrative areas etc.

Map data source: Department of Mineral Resources
(<http://www.dmr.gov.za/Maps/21.10.2010/Limpopo%20Region.pdf>)