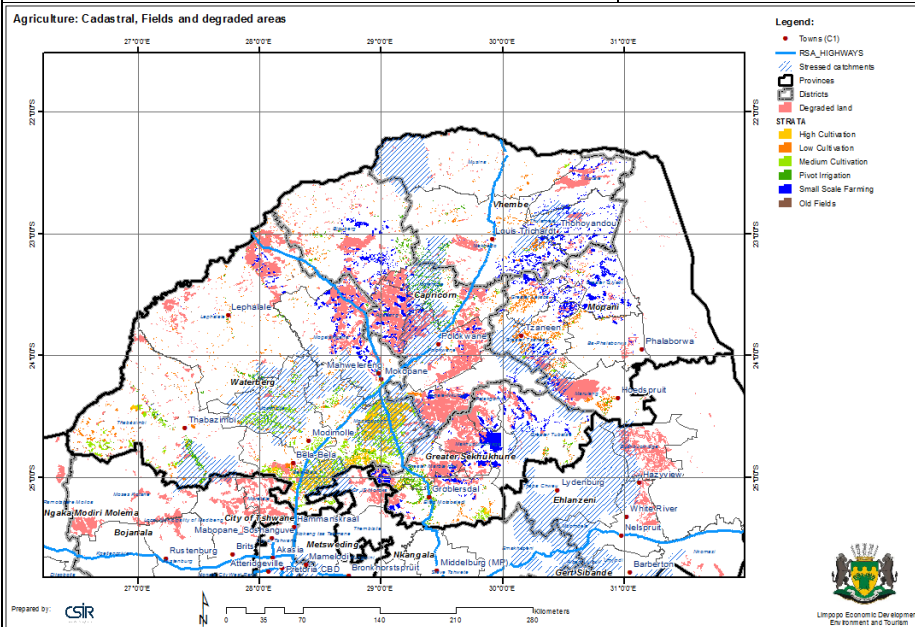


THEME:

AGRICULTURE: CADASTRE, FIELDS AND DEGRADED AREAS

CATEGORY:

LAND



This map contains a comparison of agricultural fields and degraded areas within the province. The importance of agriculture in the provincial economy has to be considered along with the environmental constraints - mainly the availability of water. The map illustrates distressed catchment where the use of water exceeds the sustainable supply.

Land usage per farm is also indicated for some uses.

This map contains the following layers:

- Distressed catchments
- Degraded land (land cover)
- Land usage per cadastre (exclusion from agriculture)
- Agriculture fields
- Irrigation
- Arable land

Note: not all layers are active – the user must activate it to be visible.

Source(s):

Department of Water Affairs and Forestry, DWAF.

Limpopo Department of Agriculture (2012). The mapping of Agriculture Commodity Production in

the Limpopo Province. Limpopo Dept. of Agriculture. 136p.

National land cover study, 2000.