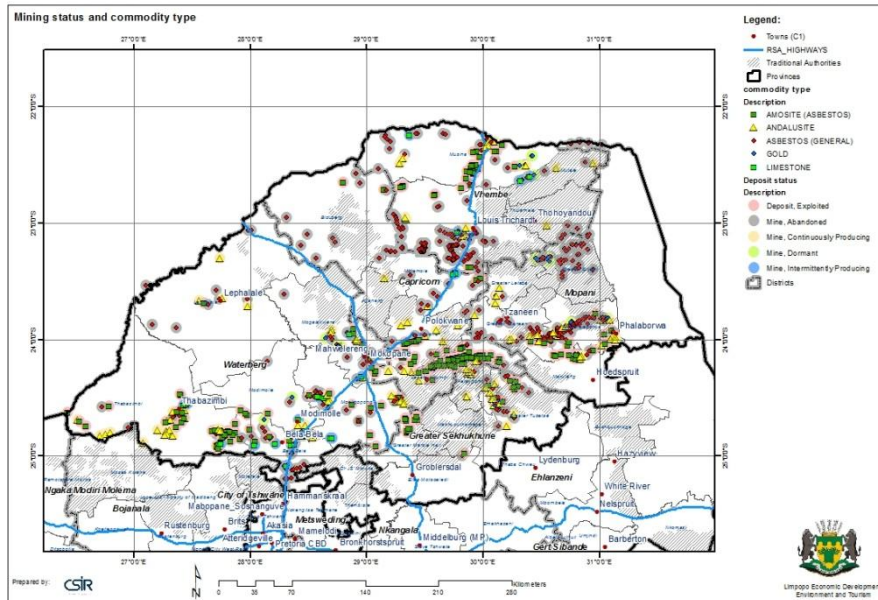


**THEME:**

**DEPOSIT STATUS AND COMMODITY**

**CATEGORY:**

**LAND - MINING**



This map illustrates the status of mining activity/ deposits at mines within the Limpopo Province. Mining activity could be influenced by a number of factors, including operational costs, environmental impacts, commodity prices, size of the mineral deposit, etc. The type of mining activity/ deposits presented in this map include:

- **Exploited deposit (275 deposits):** A deposit where subsurface exploratory work has proved that the quality and quantity of the commodity(ies) are such that exploitation has been, or is currently feasible, or is likely to become feasible in the future.
- **Abandoned mines (525 mines):** Mines at which no exploitation of mineral is taking place at all.
- **Continuously producing mines (127 mines):** Mines where there is continuous mining activity and production.
- **Dormant mines (27 mines):** Mines that are currently closed and not operational, but may re-open in the future due to a number of factors.
- **Intermittently producing mines (31 mines):** These mines are not operational on a continuous basis, but production takes place when the necessary conditions make it sustainable to mine.

The layer includes a description of the primary commodity exploited at each of the mines.

This map contains the following layers:

Mining activity/ deposit status

Settlements – settlement polygons created by DWAF

Basemap layerset – contains roads, administrative areas etc.

**Map source:** Council for Geoscience