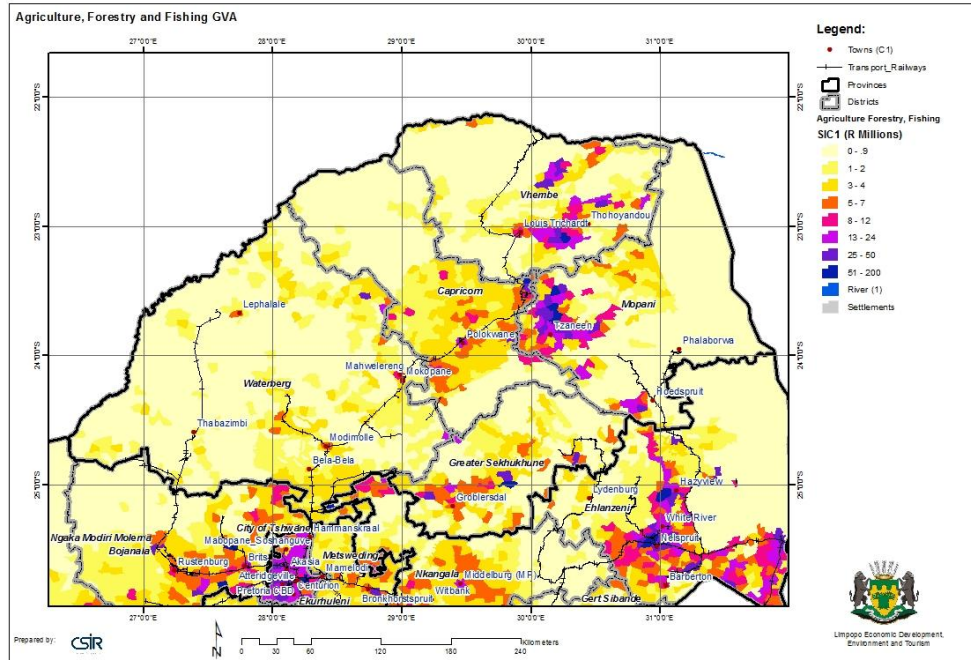


THEME:**AGRO-FORESTRY AND FISHING GVA****CATEGORY:****ECONOMIC****Agro-forestry and fishing GVA**

In this category, establishments which are primarily engaged in farming activities are classified, such as the growing of field crops, the raising of livestock and the production of milk, wool and eggs. Establishments rendering agricultural services such as harvesting, baling, threshing and spraying are also classified under this major division. Also included are establishments engaged in commercial hunting and game propagation and forestry, logging and fishing.

Using the 2009 Quantec GVA values combined with a dasymetric mapping process the values was relayed to the mesozones. Several *weight layers* were used to obtain the mesoframe-based estimate of the spatial distribution of agriculture, hunting and related services activities. This includes land cover information derived from satellite images (the South African National Land Cover dataset for 2001), and a map of long term grazing capacity produced for AGIS.

This map contains the following layers:

- Base layers
- Mesozones with sectoral attributes

- Settlements

Note: not all layers are active – the user must activate it to be visible.

Source(s): Base layers from different sources including:

- CSIR Built Environment, 2009
- Quantec, 2009
- Demarcation Board, 2012
- Statistics South Africa, 2012