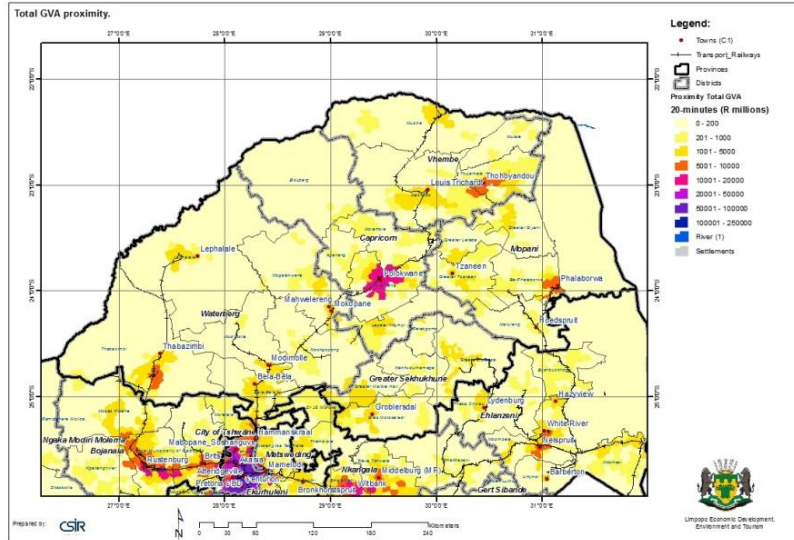


THEME:

TOTAL GVA PROXIMITY

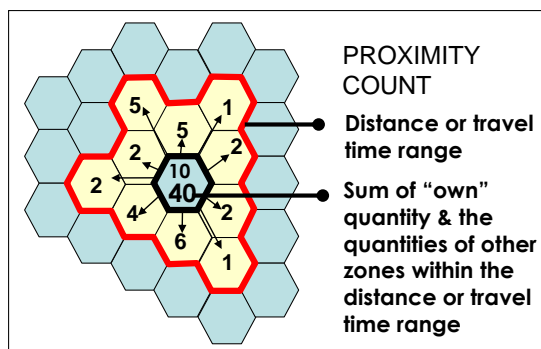
CATEGORY:

ECONOMIC



Total GVA per proximity region

In order to overcome the geo-statistical distortions that might be caused by varying sizes of administrative regions, the GVA values in this map have been assembled for so-called “proximity regions” around each mesozone (see red border on diagram below) These are defined to include all surrounding zones within a 20 minute travel time range, measured along the road network. The technical term for the total GVA values on the map is a *proximity count* (see Technical Overview document on www.gap.csir.co.za for a more extensive explanation).



GIS related Metadata

To access metadata files on spatial layers used in this map, [follow this link](#).

This map contains the following layers:

- Base layers
- Mesozones with proximity data
- Parks

- Elevation

Note: not all layers are active – the user must activate it to be visible.

Source(s): Base layers from different sources including:

- Department of Environmental Affairs, 2011
- Demarcation Board, 2012
- CSIR Built Environment, 2012
- Surveyor General, 2012
- Statistics South Africa, 2012