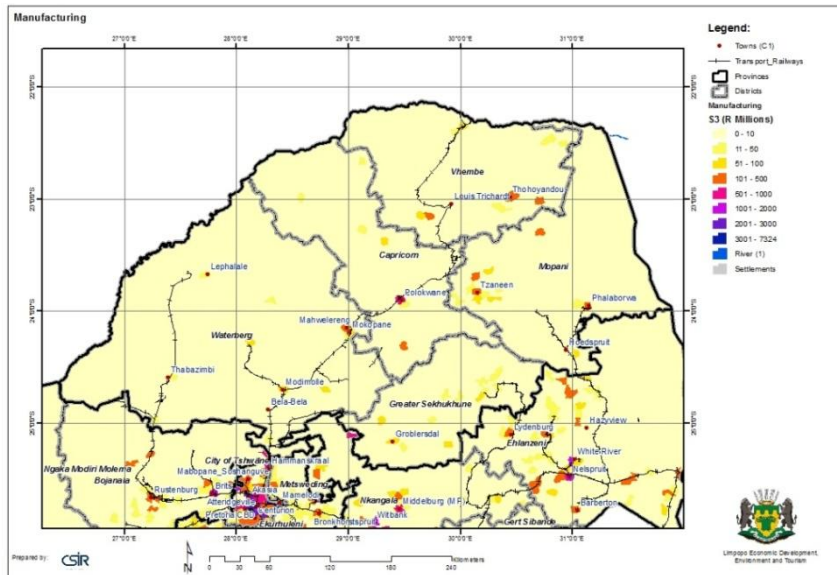


**THEME:****MANUFACTURING GVA****CATEGORY:****ECONOMIC****Manufacturing GVA**

Using the 2009 Quantec GVA values combined with a dasymetric mapping process the values was relayed to the mesozones. Several *weight layers* were used to obtain the mesoframe-based estimate of the spatial distribution of this sector. The SPOT building count was also used in the process to determine the location of manufacturing entities.

This map contains the following layers:

- Base layers
- Mesozones with sector specific attributes
- Settlements

**Note: not all layers are active – the user must activate it to be visible.**

**Source(s):** Base layers from different sources including:

- CSIR Built Environment, 2013
- Quantec, 2009
- Demarcation Board, 2012
- Statistics South Africa, 2012