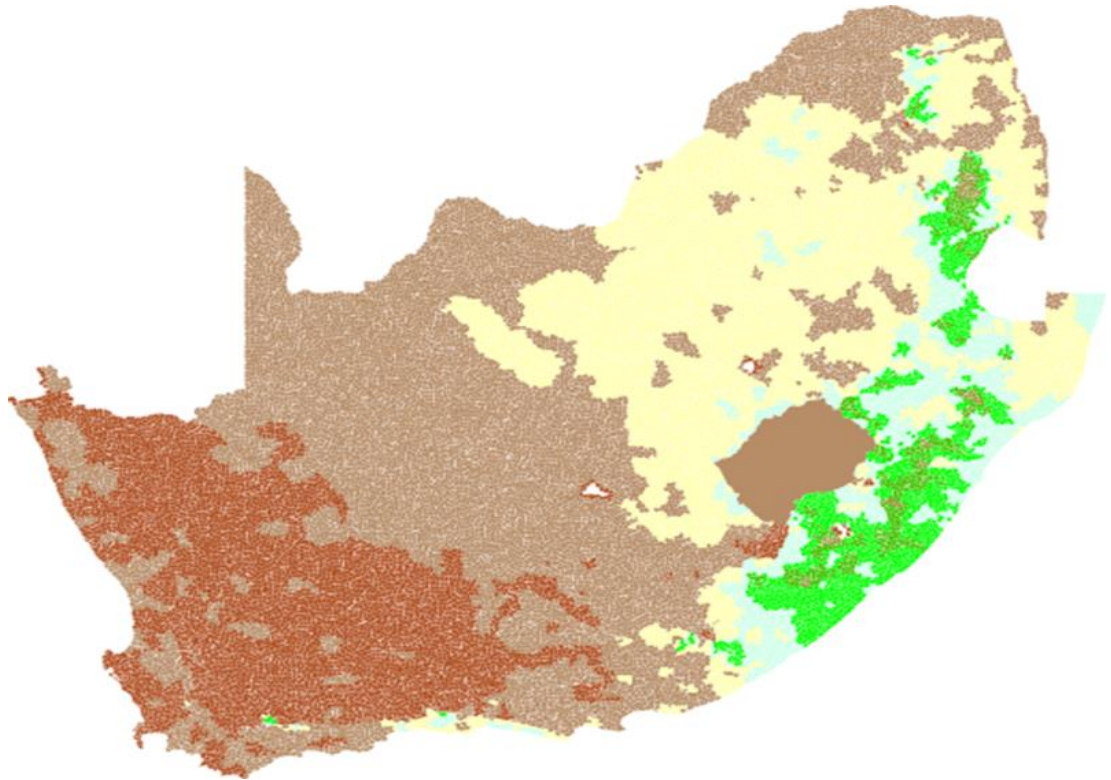
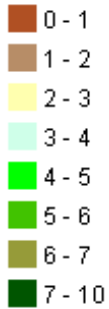


Maize (Short Hybrid) Yield Estimation**Legend**

Maize, Short Hybrid

Yield (t/ha)



Author(s): Derived from Schulze, R.E and Walker, N.J (2007)

Date: 2007

Meta-Data

Title	Maize (short hybrid) yield estimates per mesozone
File Name	meso_tha_maizeshort_wgs84.shp
Author(s)	Derived from Schulze, R.E and Walker, N.J (2007)
Publication Date	2007
Citation	Schulze, R.E. and Walker, N.J. 2007. Maize Yield Estimation. In: Schulze, R.E. (Ed). 2007. South African Atlas of Climatology and Agrohydrology. Water Research Commission, Pretoria, RSA, WRC Report 1489/1/06, Section 16.2.
License	Creative Commons 4.0 BY SA (No restrictions on re-use, proper citation and attribution require

Abstract	<p>*The data shows maize yield estimates allocated to mesozones. Yield estimates were derived from Schulze R.E. and Walker N.J. (2007) and then allocated to mesozones by combining with a base mesozone layer obtained from the CSIR Geospatial Analysis Platform (GAP).</p> <p>*This dataset contains Maize, <i>Zea mays</i> L. in South Africa and is the country's most important field and grain crop. Objectives of the study was to simulate maize yields, and their inter-annual, at a spatial resolution of Quaternary Catchments for 12 different combinations of three plant dates, viz. 15 October, 15 November and 15 December. This was done to evaluate which hybrid lengths and plant dates give the highest yields irrespective of plant dates and hybrid lengths respectively and also which hybrid lengths and plant dates give the lowest coefficients of variation (%) irrespective of plant dates and hybrid lengths respectively.</p>
Keywords	agriculture, crops, maize, maize hybrid, mesozones, yield estimation
Caveats	http://bea.dirisa.org/resources/metadata-sheets/WP03_00_META_MAS.pdf
Web Meta-Data	
Web Resource	http://app01.saeon.ac.za:8086/geoserver/BEA/wms?service=WMS&version=1.1.0&request=GetMap&layers=BEA:meso_tha_maizeshort_wgs84&styles=&bbox=16.45192000002853,-34.83416989569373,32.89253174669768,-22.12503000000106&width=512&height=395&srs=EPSG:4326&format=application/openlayers

Methodology/ Protocol

Processing/ Provenance	As described above
------------------------	--------------------

Important Attributes

MESO_ID	Meso-zone ID
AREA_MB_HA	Meso-zone area, ha
MESO_THA_T	Maize (short hybrid) yield estimates, t/ha
MESO_THA_Y	Maize (short hybrid) yield estimates, t/ha - Season starting in December
MESO_THA_1	Maize (short hybrid) yield estimates, t/ha - Season starting in November
MESO_THA_2	Maize (short hybrid) yield estimates, t/ha - Season starting in October

References and Sources

[1]	<p>Base Mesozone Dataset: http://196.21.191.61:8085/geoserver/GAP/wms?service=WMS&version=1.1.0&request=GetMap&layers=GAP:meso_2010_base_wgs84&styles=&bbox=16.4519200000285,-34.8341698956937,32.8925317466977,-22.1250300000011&width=512&height=395&srs=EPSG:4326&format=application/openlayers</p>
[2]	<p>Geospatial Analysis Platform. 2015. GAP. [ONLINE] Available at: http://www.gap.csir.co.za/. [Accessed 30 March 2015].</p>
[3]	<p>Maize (Short Hybrid) Yield Dataset: http://196.21.191.61:8082/geoserver/BEEH_shp/wms?service=WMS&version=1.1.0&request=GetMap&layers=BEEH_shp:maizeshort.shp&styles=&bbox=16.469,-34.834,32.891,-22.124&width=512&height=396&srs=EPSG:4326&format=application/openlayers</p>
[4]	<p>Schulze, R.E. and Walker, N.J. 2007. Maize Yield Estimation. In: Schulze, R.E. (Ed). 2007. South African Atlas of Climatology and Agrohydrology. Water Research Commission, Pretoria, RSA, WRC Report 1489/1/06, Section 16.2.</p>